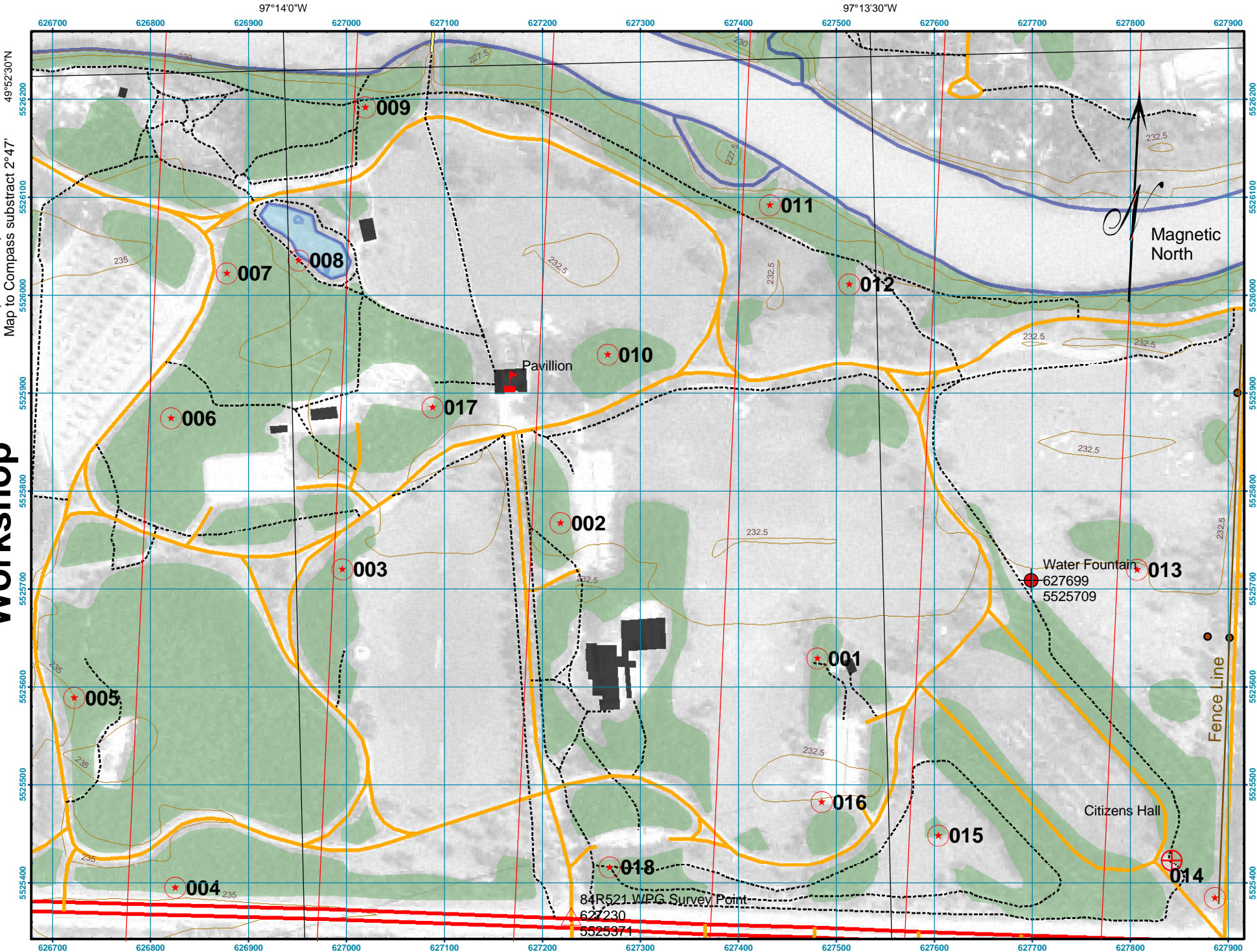


# University of Manitoba, Map & Compass Recreation Services Workshop

Map author: Charles Burchill, June 30, 2006,  
Scale: 1 Centimeter equals 50 meters (1:5000),  
Declination: 2°47' east of grid  
Compass to Map add 2°47',  
Map to Compass subtract 2°47'



Coordinate system: UTM Zone 14U, NAD83. Grid north 1° 20' east of true, magnetic north 4° 07' east of true  
Data Sources: Monumented points: City of Winnipeg Dept. Planning. Road & Topo Features: Topographic maps (062h14), Manitoba Land Initiative (<http://web2.gov.mb.ca/mli/>)

