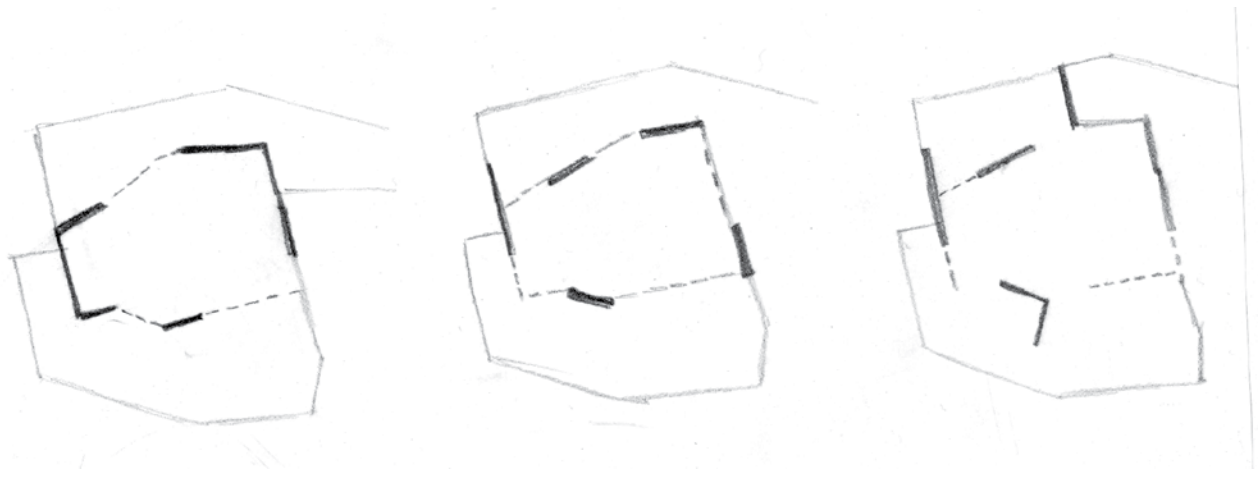
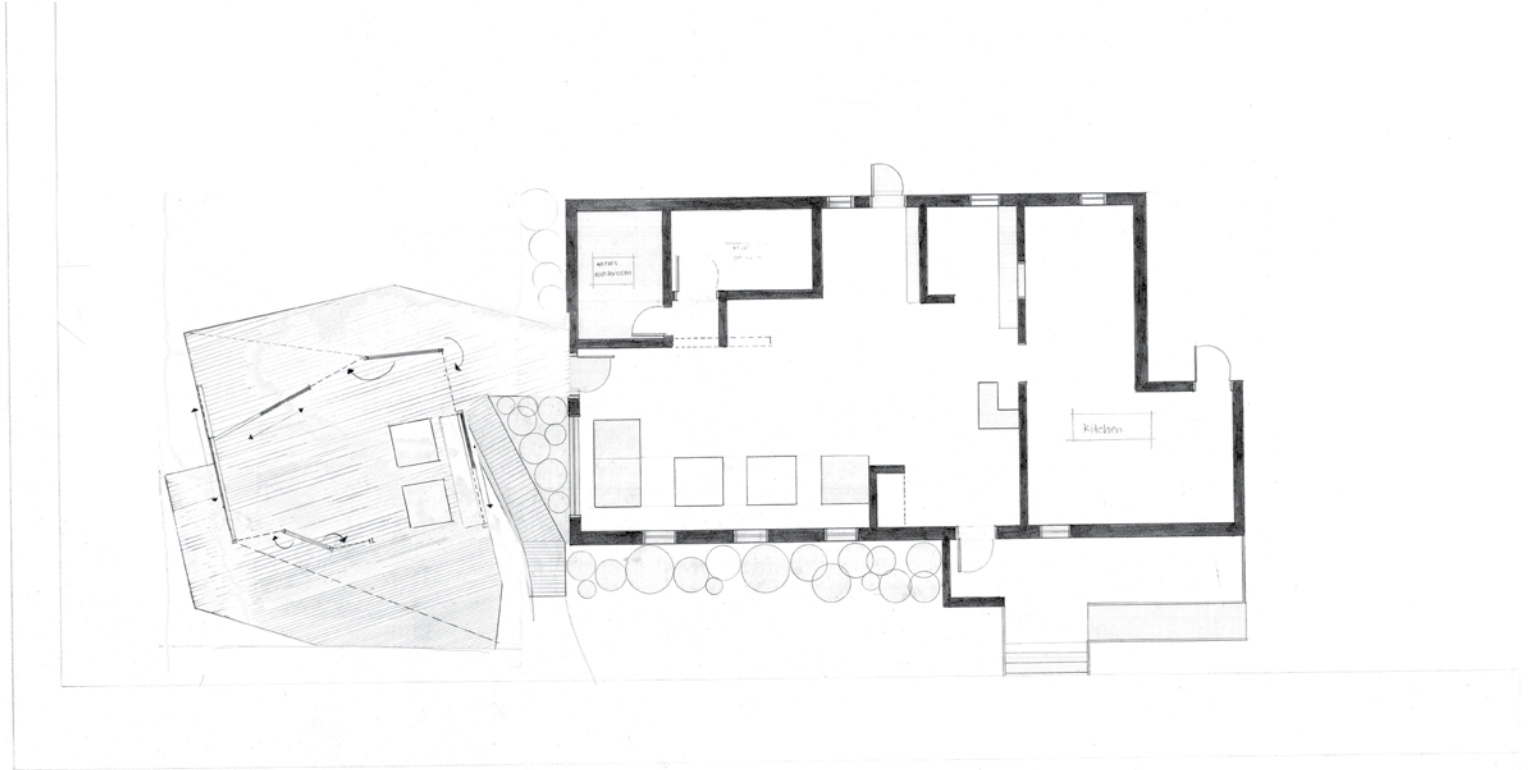


[site: restaurant]

steff beernaerts

The restaurant remains the heart of the town, the essence of Clearwater. It is a space that can momentarily be adapted to the immediate function it must fulfill, but always reverts back to its original form. The design of the patio is founded on a series of sliding and collapsable doors, which start to create adaptable spaces. Intimate spaces can be created by manipulating the doors, while larger gatherings can be accommodate by opening the entire structure up, allowing its contents to spill out into the surrounding space. A strong connection to street front was consdiered as the wood decking extends to the edge of the sidewalk, inviting passerby's in. A door and a large window have been incorporated in the West wall of the restaurant, connecting the dining area to the patio space, and creating a transition from the interior to the exterior.



proposed plan



north elevation