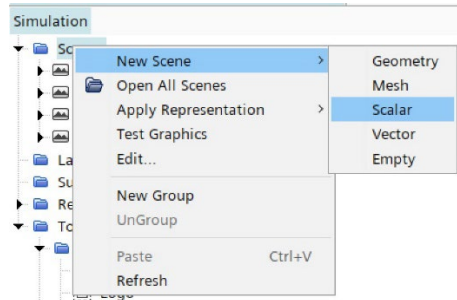
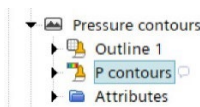


This example uses the half tube simulation and assumes that the midplane has been created. A pressure contour plot is created on the midplane.

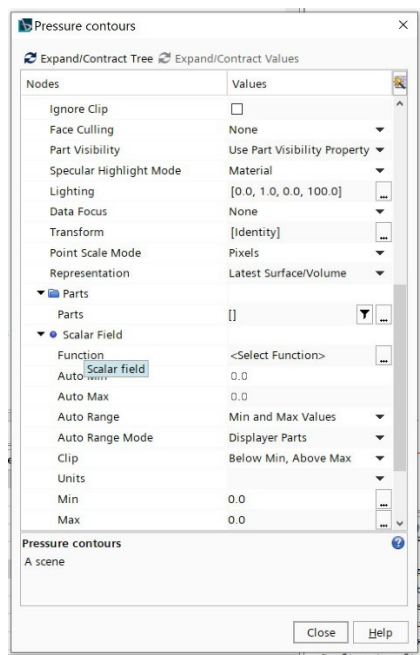
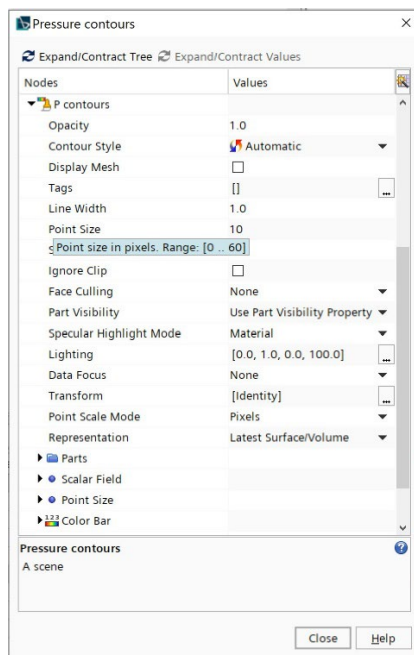
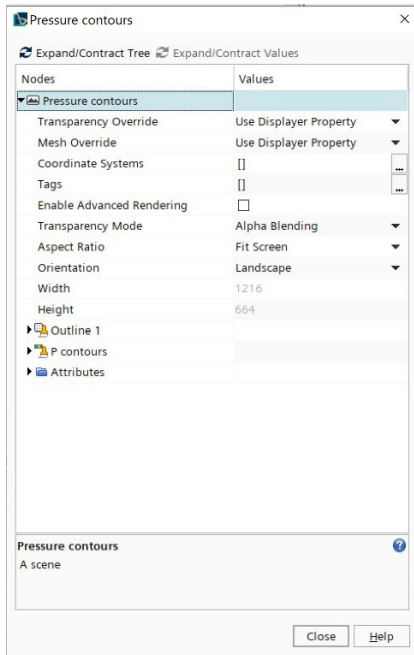
1. Right click Scenes -> New Scene -> Scalar



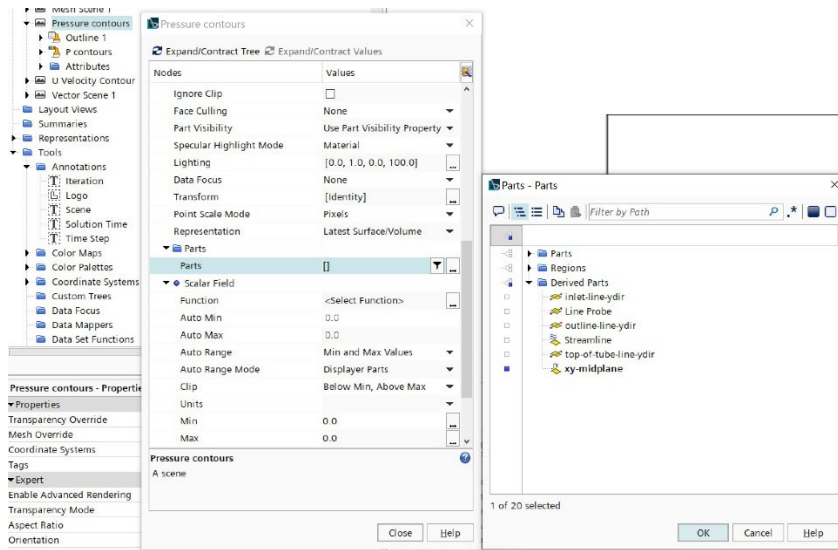
2. Right click on "Scalar Scene 1" and rename to "Pressure contours"
3. Expand the "Pressure contours" tree and rename "Scalar 1" to "P contours"



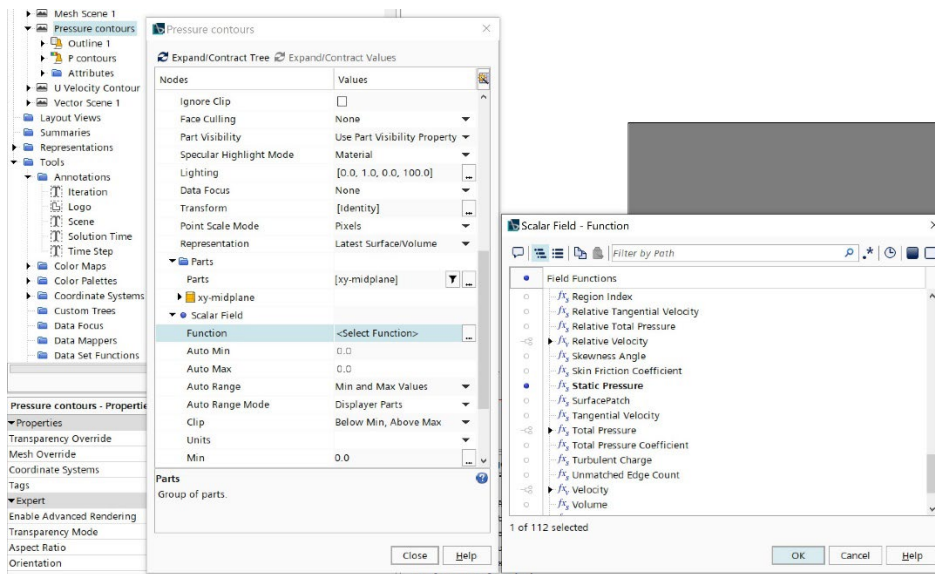
4. Right click on "Pressure contours" and choose Edit. In the Edit dialog, expand the "P contours", and then in that tree, expand Parts and Scalar Field.



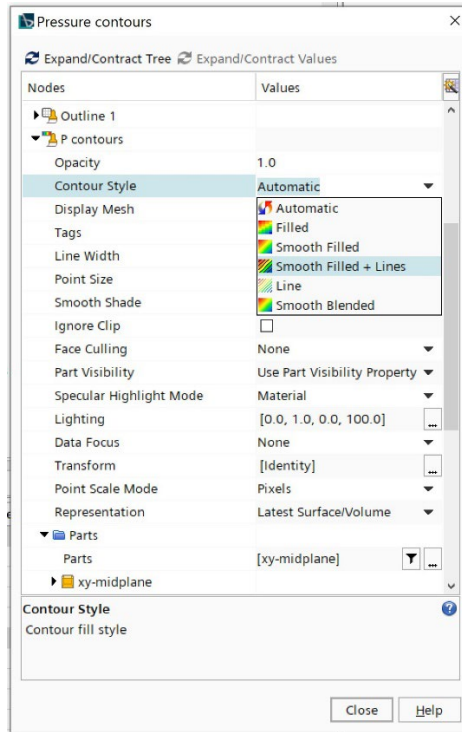
5. In Parts, select midplane under Derived Parts, then click OK.



6. Under Scalar Field, in Function, select Static Pressure, then click OK.



7. To adjust the way the contours are plotted, use the pull-down menu under "Contour Style". For example, you could choose Smooth Filled + Lines. Then click on Close.



8. You should get something that looks like:

