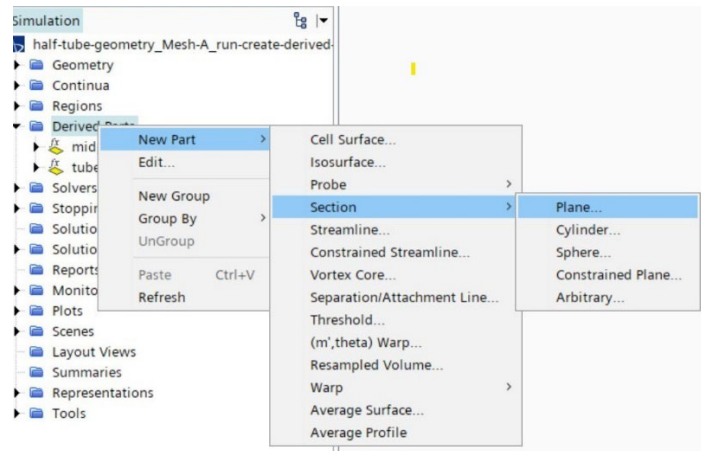
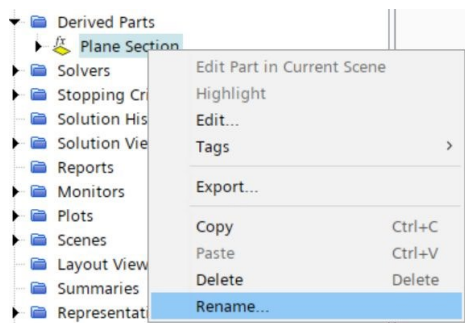


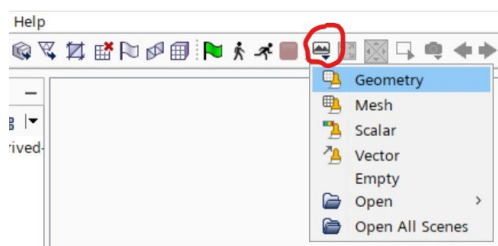
1. Right click Derived Parts -> New Part -> Section -> Plane



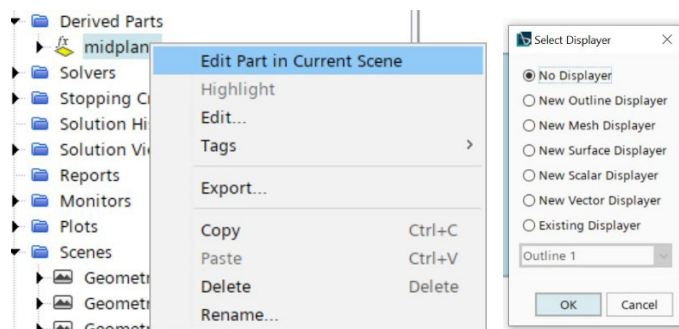
2. Right click on "Plane Section" and rename to "midplane"



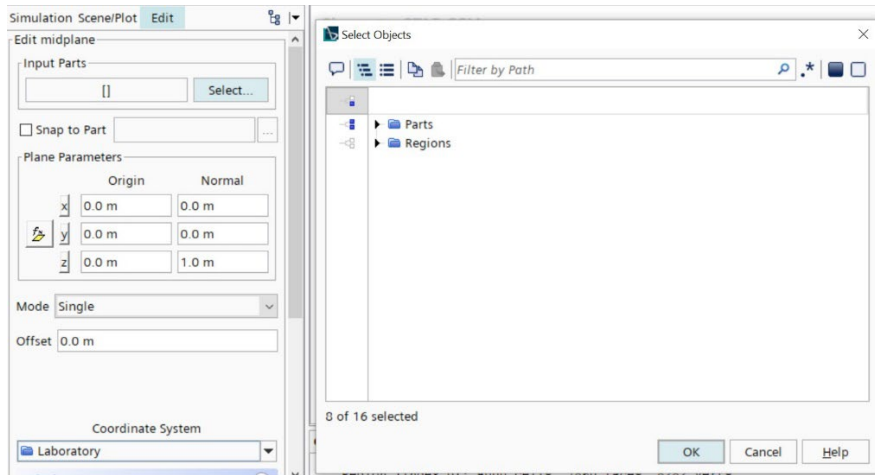
3. Create a Geometry scene



4. Right click on midplane and "Edit Part in Current Scene". Choose No Displayer, then click OK.



5. For Input Parts, select Parts, then click OK.



6. Set origin at  $x=0$  m ,  $y=0.11$  m ,  $z=0.004$  m; Set normal as 0,0,1. Then click Apply and then Close.

