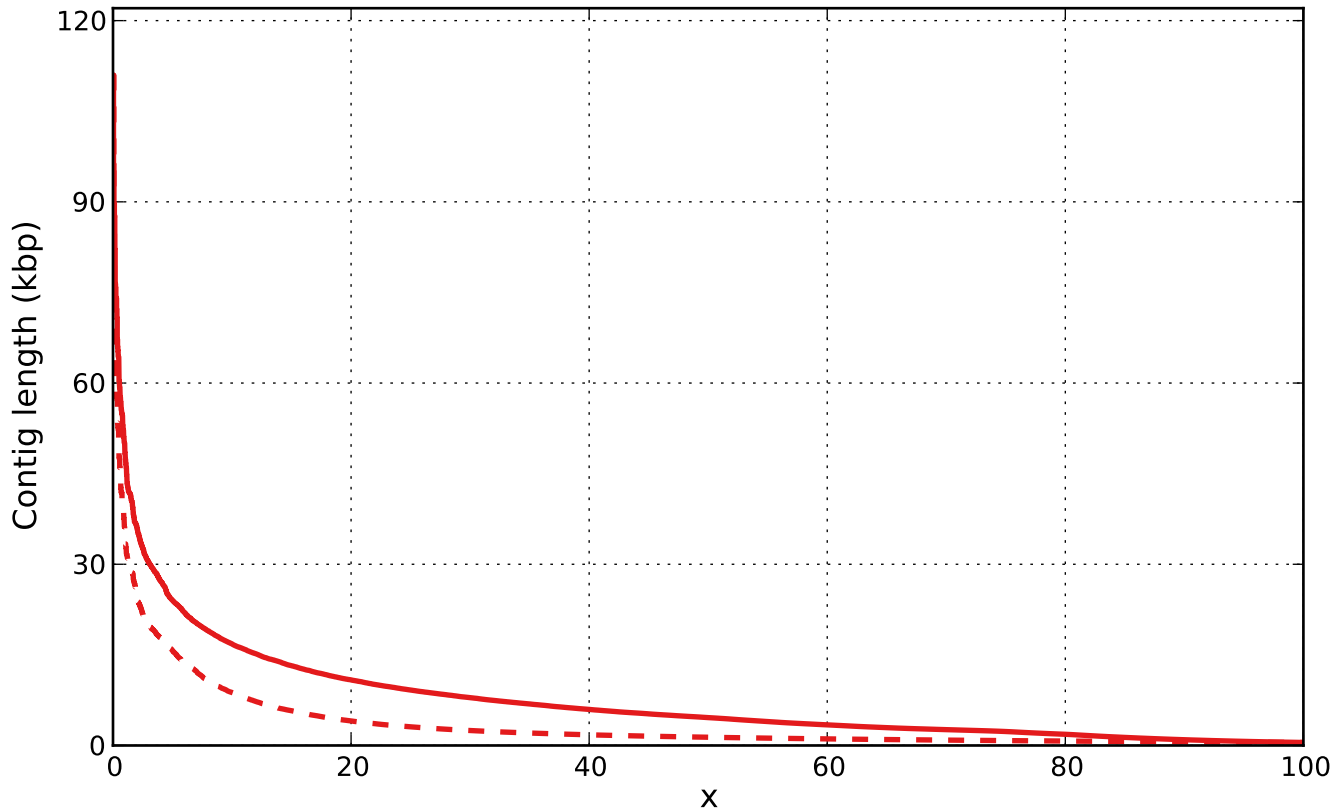


Report

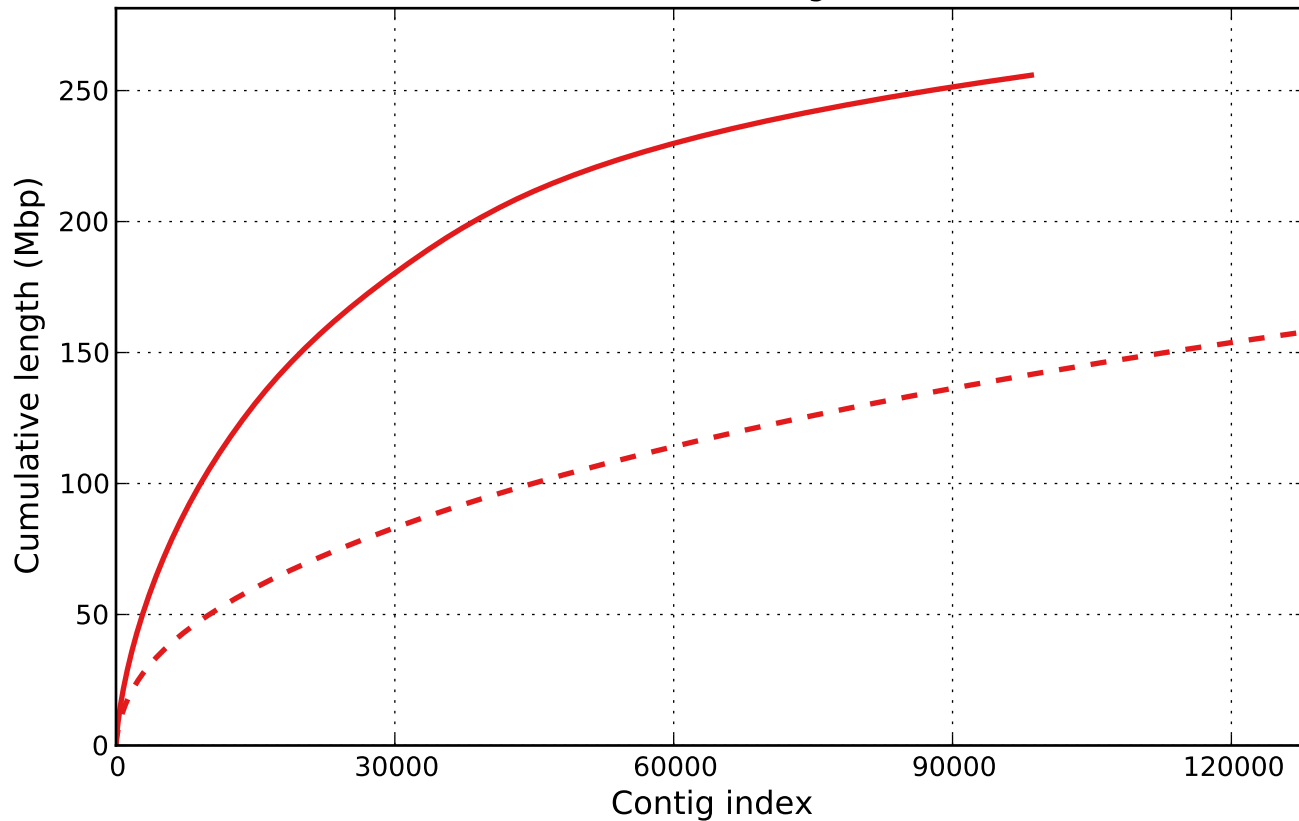
	SOAPdenovo2-1.scafSeq	SOAPdenovo2-1.scafSeq_broken
# contigs (>= 0 bp)	482749	-
# contigs (>= 1000 bp)	58578	46216
# contigs (>= 5000 bp)	12704	2717
# contigs (>= 10000 bp)	3535	789
# contigs (>= 25000 bp)	327	80
# contigs (>= 50000 bp)	39	11
Total length (>= 0 bp)	341262488	-
Total length (>= 1000 bp)	228456580	101401077
Total length (>= 5000 bp)	119830723	26636781
Total length (>= 10000 bp)	57145040	13519626
Total length (>= 25000 bp)	11730301	3021111
Total length (>= 50000 bp)	2507623	745302
# contigs	98478	128070
Largest contig	110960	110960
Total length	255861695	157968718
GC (%)	54.82	54.98
N50	4611	1364
N75	2309	807
L50	14391	26861
L75	34701	65279
# N's per 100 kbp	29451.44	18.54

All statistics are based on contigs of size >= 500 bp, unless otherwise noted (e.g., "# contigs (>= 0 bp)" and "Total length (>= 0 bp)" include all contigs).

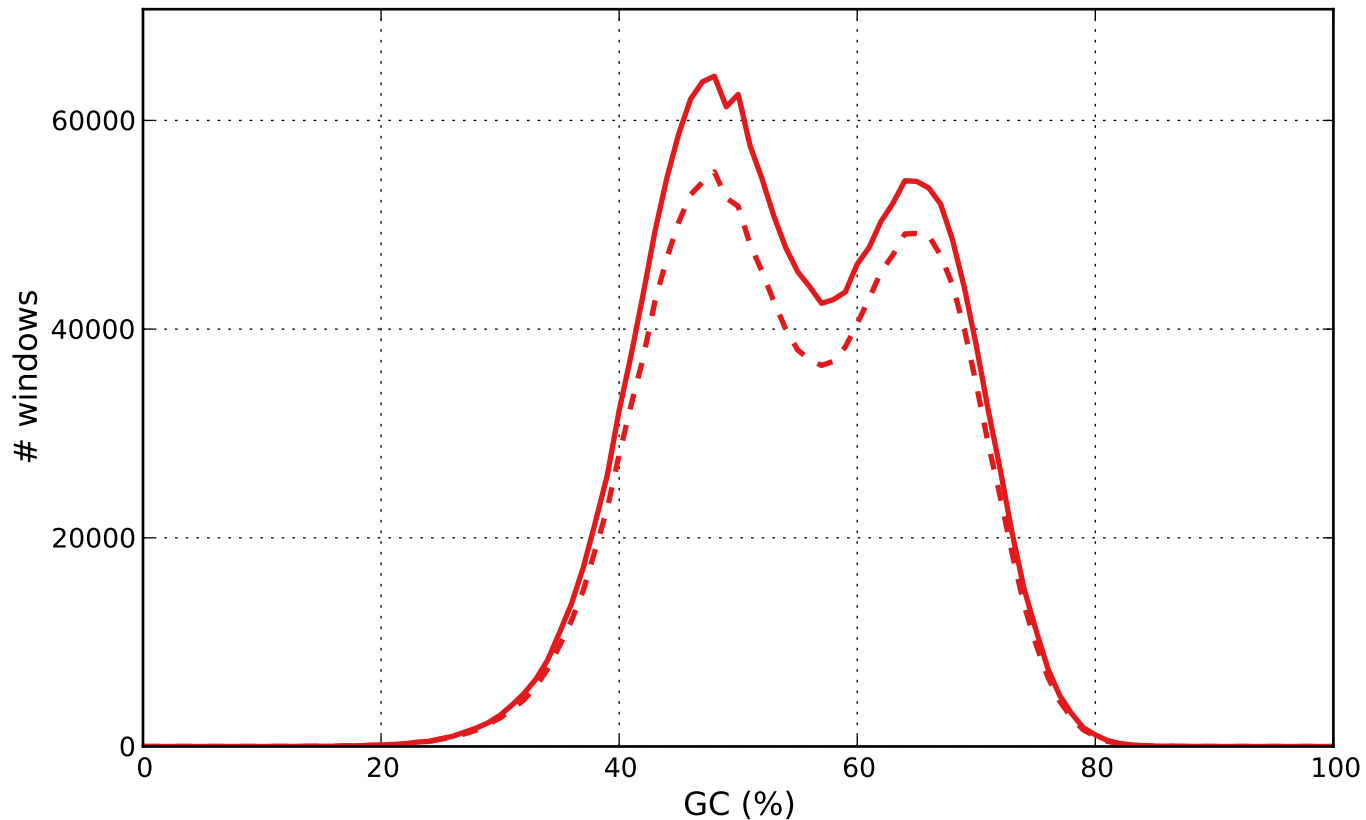
Nx



Cumulative length

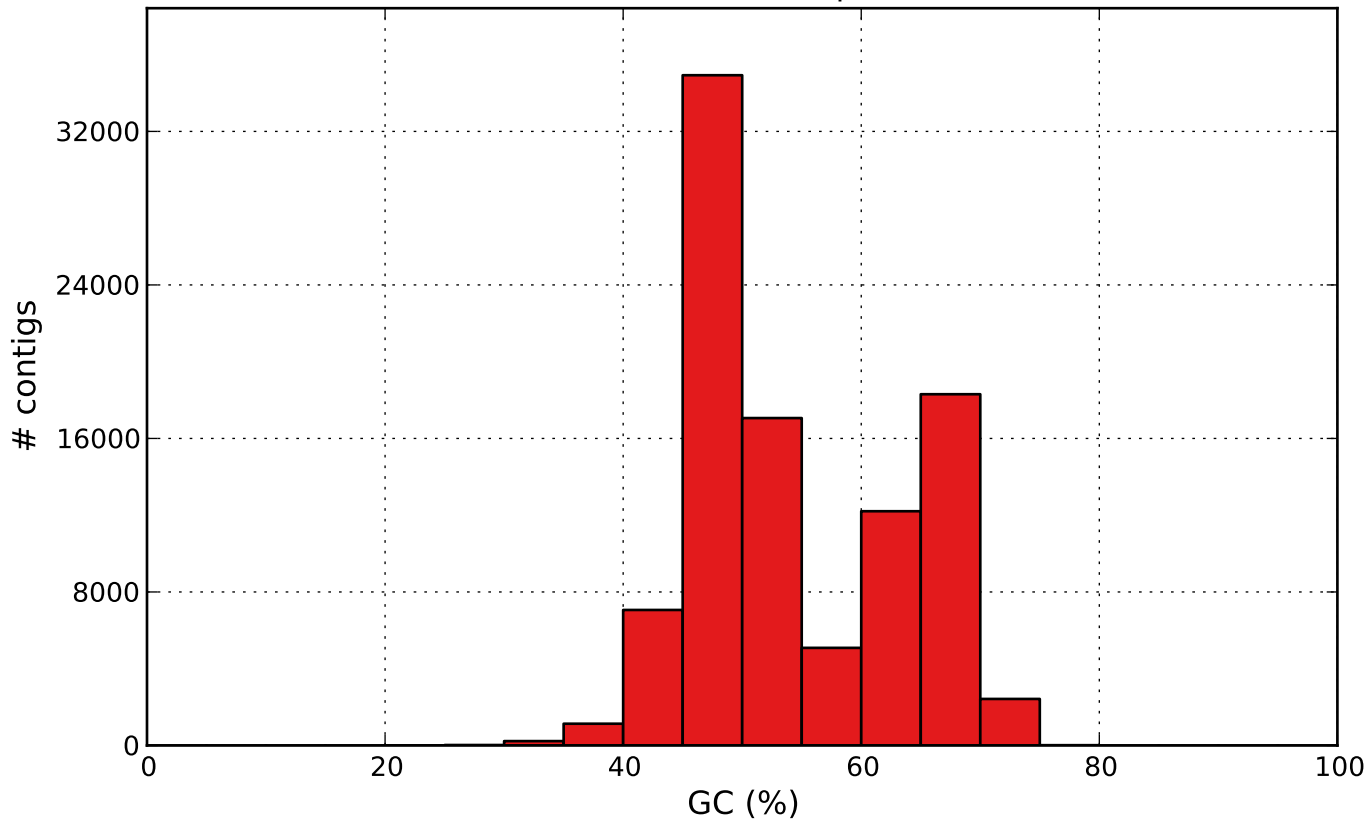


GC content



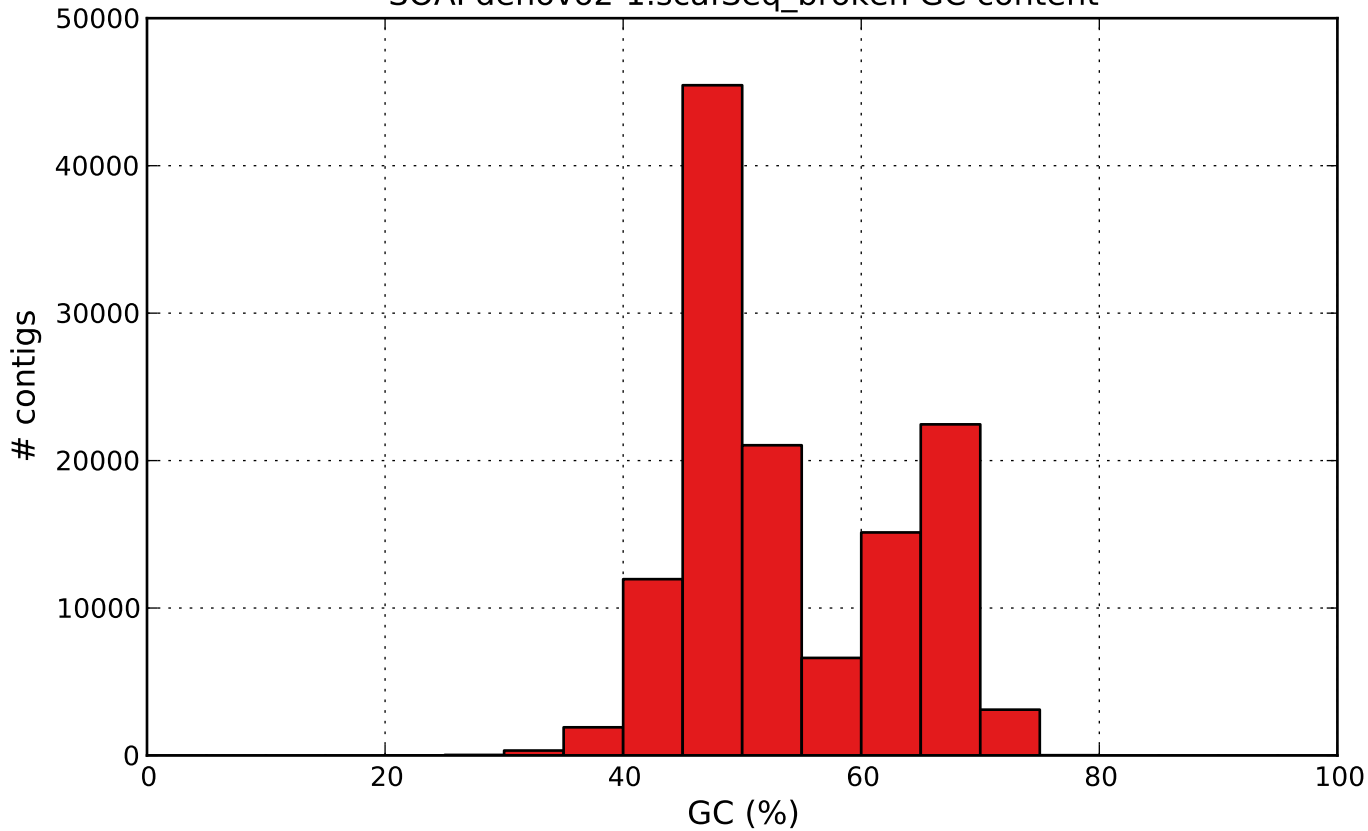
— SOAPdenovo2-1.scafSeq - - SOAPdenovo2-1.scafSeq_broken

SOAPdenovo2-1.scafSeq GC content



SOAPdenovo2-1.scafSeq

SOAPdenovo2-1.scafSeq_broken GC content



SOAPdenovo2-1.scafSeq_broken