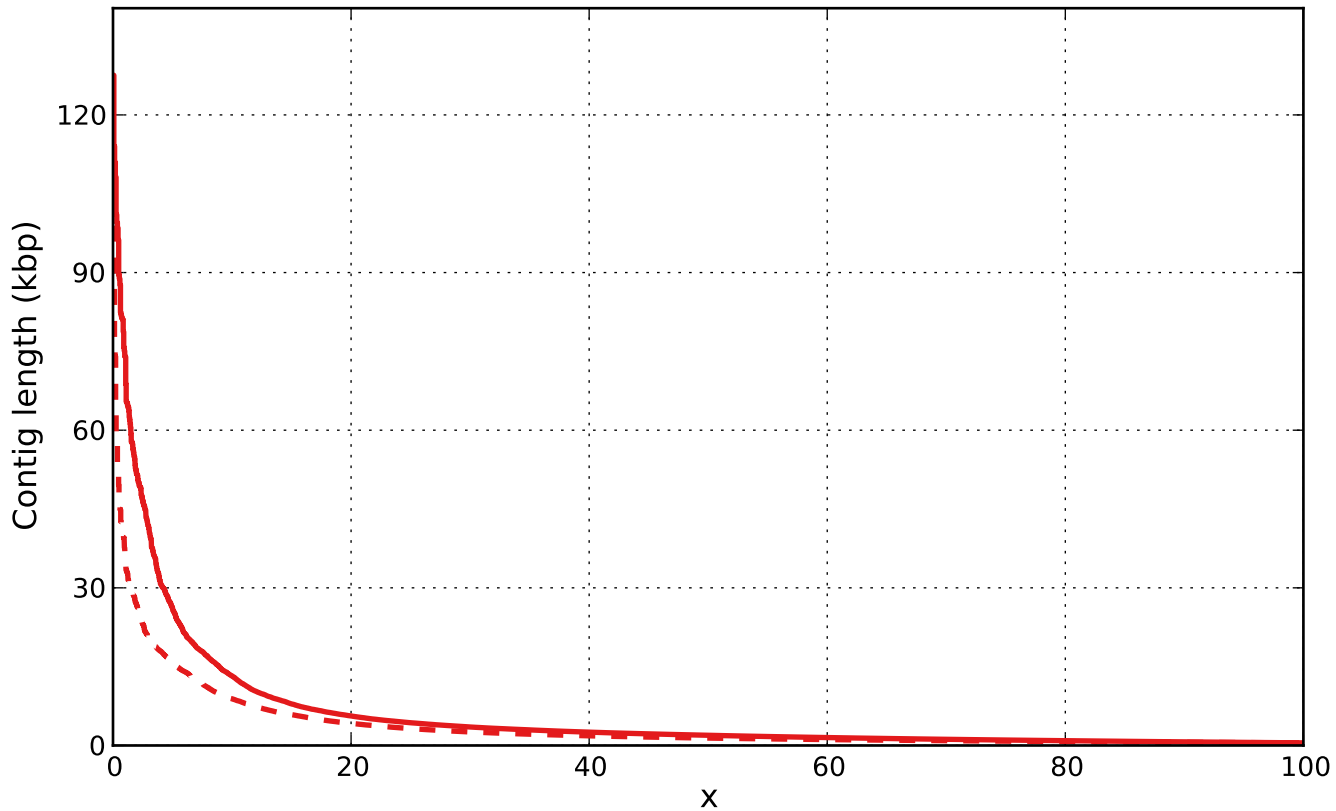


Report

	SOAPdenovo2.scafSeq	SOAPdenovo2.scafSeq_broken
# contigs (>= 0 bp)	500300	-
# contigs (>= 1000 bp)	55809	46851
# contigs (>= 5000 bp)	3647	2770
# contigs (>= 10000 bp)	1076	805
# contigs (>= 25000 bp)	216	92
# contigs (>= 50000 bp)	56	11
Total length (>= 0 bp)	264648000	-
Total length (>= 1000 bp)	136479796	103549954
Total length (>= 5000 bp)	39282442	27158771
Total length (>= 10000 bp)	22040736	13844768
Total length (>= 25000 bp)	9324017	3386518
Total length (>= 50000 bp)	3916015	745412
# contigs	115414	125347
Largest contig	127553	110960
Total length	178519097	157944652
GC (%)	54.96	55.14
N50	1943	1404
N75	1035	825
L50	21223	25916
L75	53263	63305
# N's per 100 kbp	1439.01	67.38

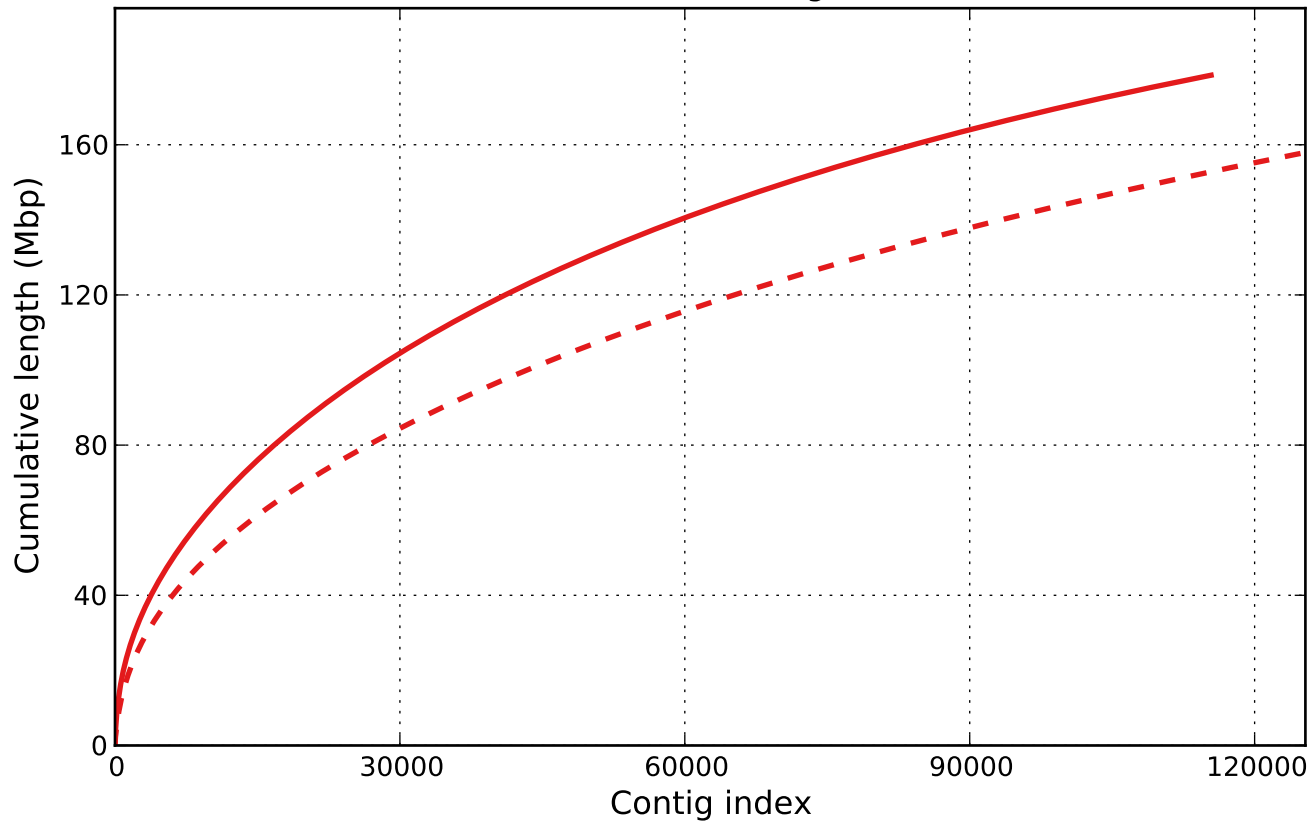
All statistics are based on contigs of size ≥ 500 bp, unless otherwise noted (e.g., "# contigs (≥ 0 bp)" and "Total length (≥ 0 bp)" include all contigs).

Nx



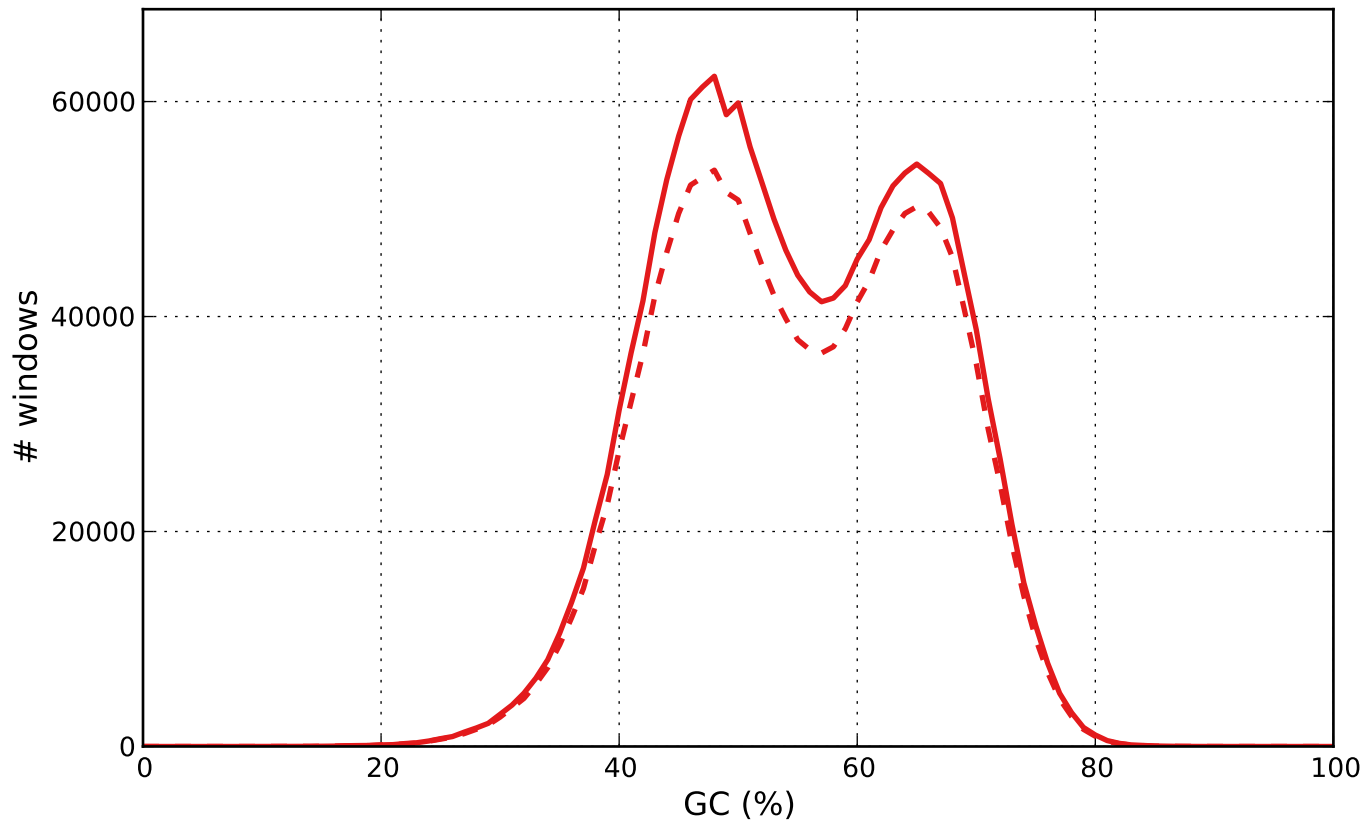
— SOAPdenovo2.scafSeq - - SOAPdenovo2.scafSeq_broken

Cumulative length



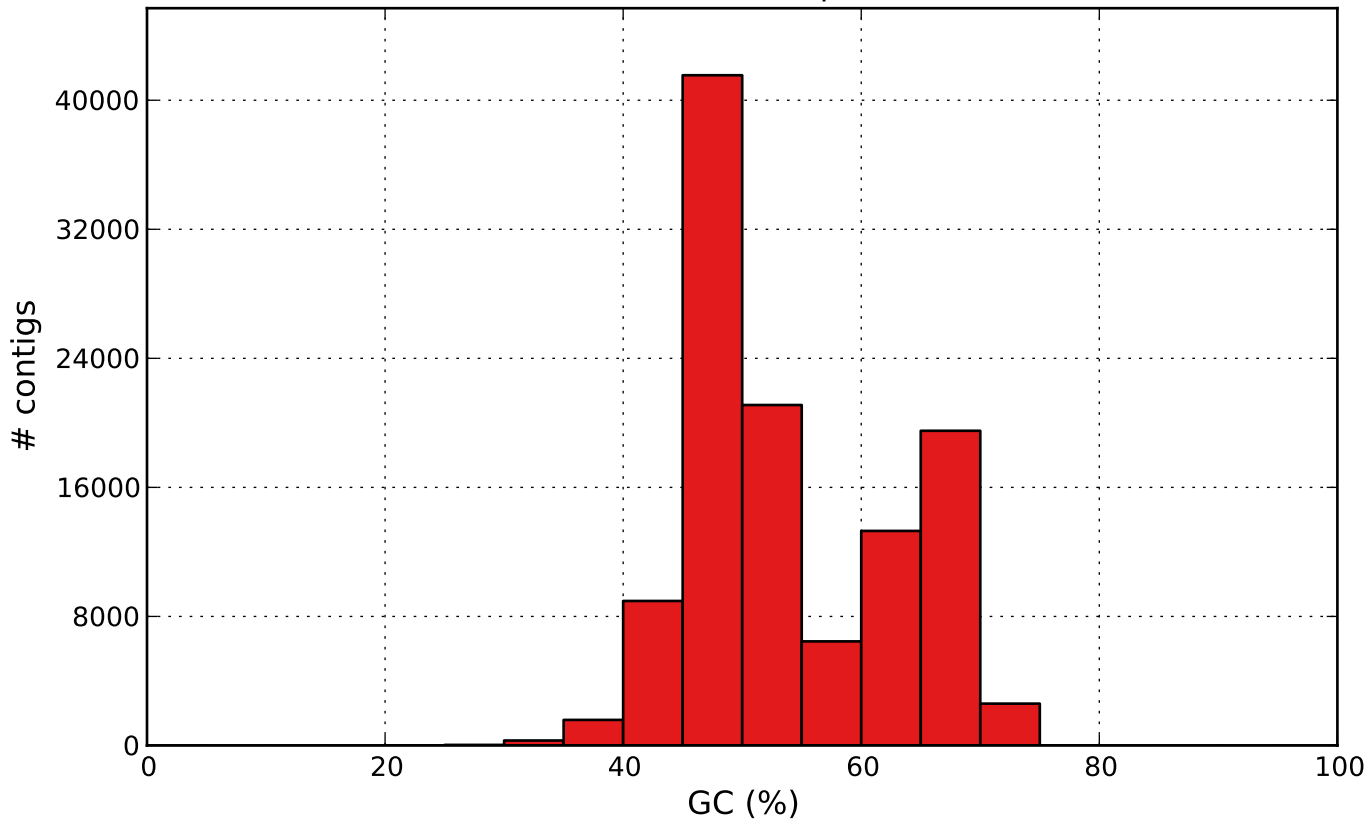
— SOAPdenovo2.scafSeq - - SOAPdenovo2.scafSeq_broken

GC content



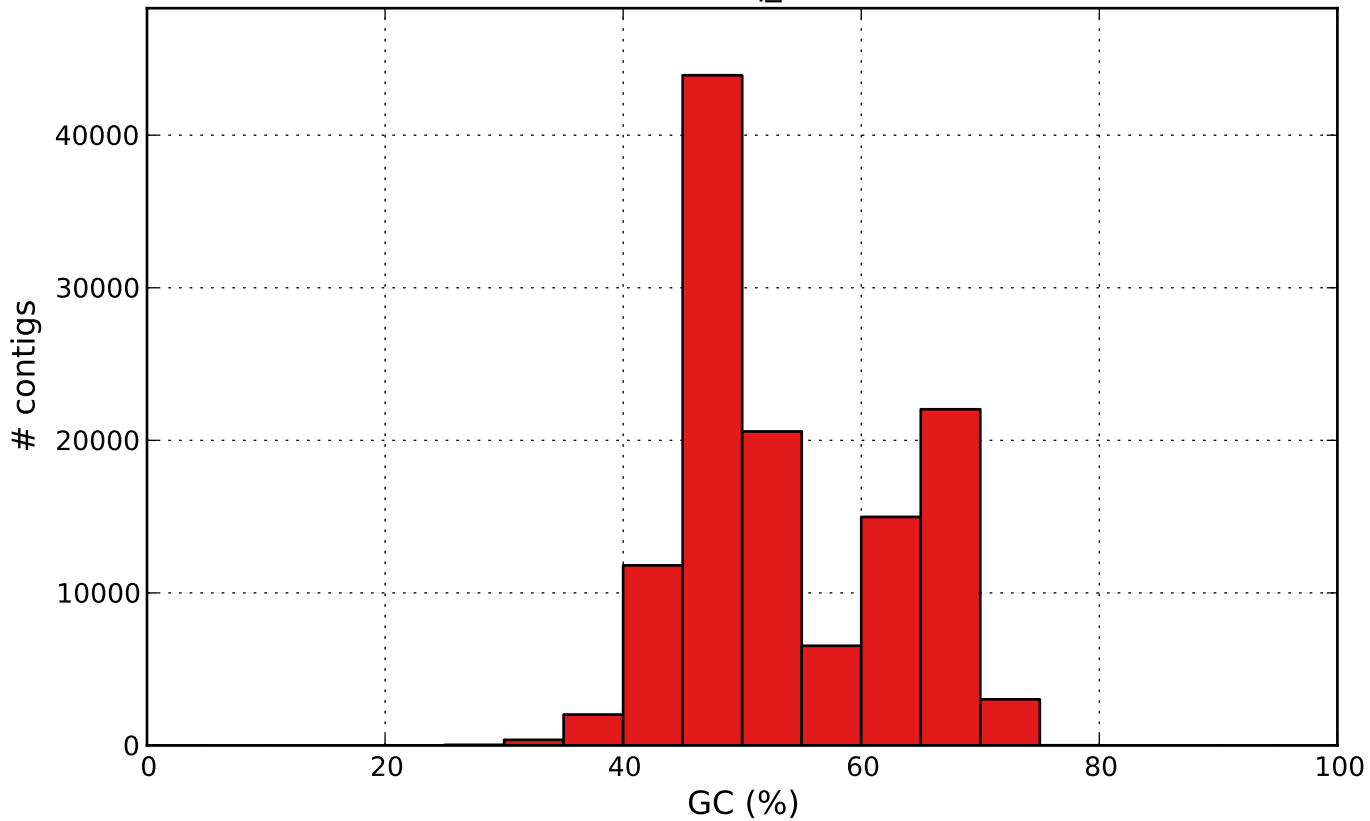
— SOAPdenovo2.scafSeq - - SOAPdenovo2.scafSeq_broken

SOAPdenovo2.scafSeq GC content



SOAPdenovo2.scafSeq

SOAPdenovo2.scafSeq_broken GC content



SOAPdenovo2.scafSeq_broken