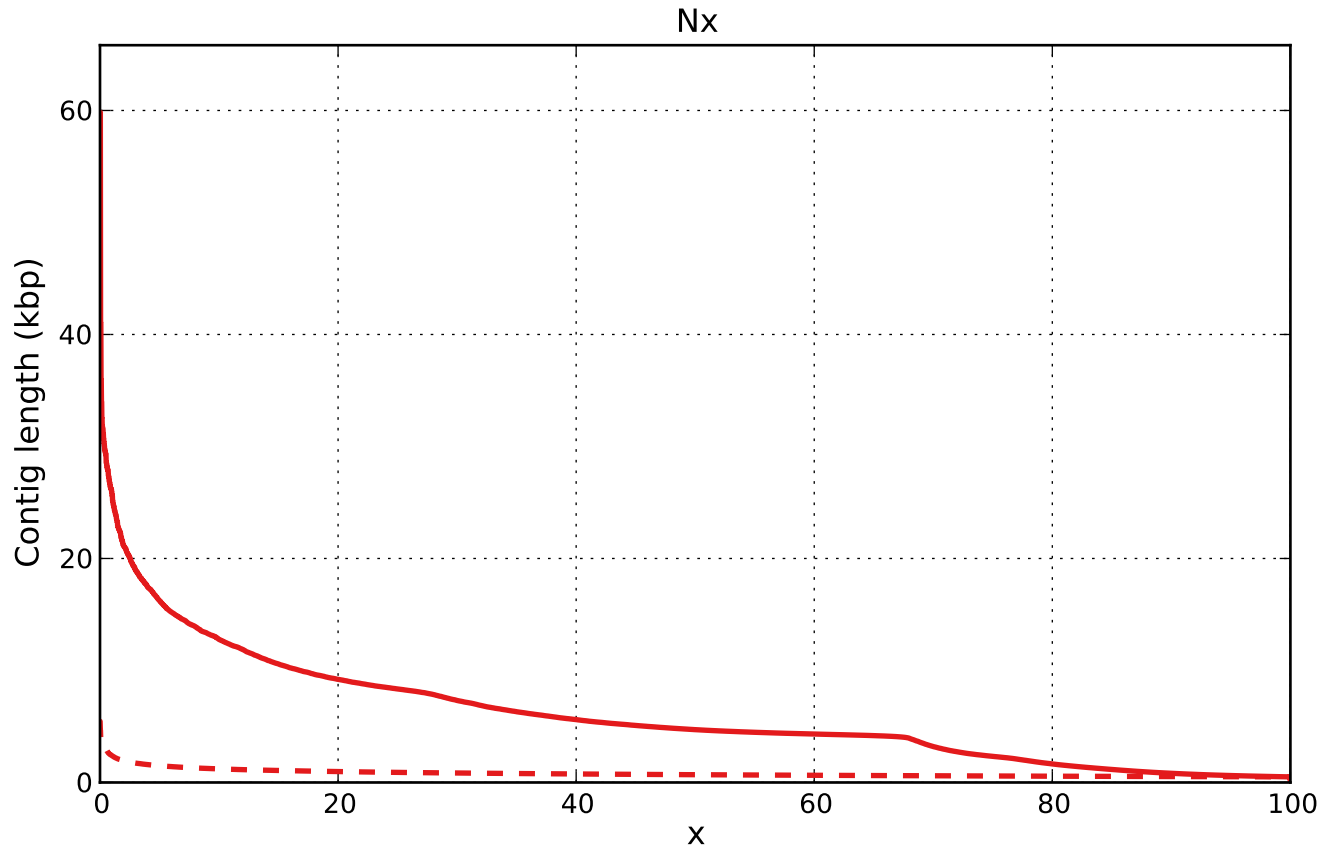


# Report

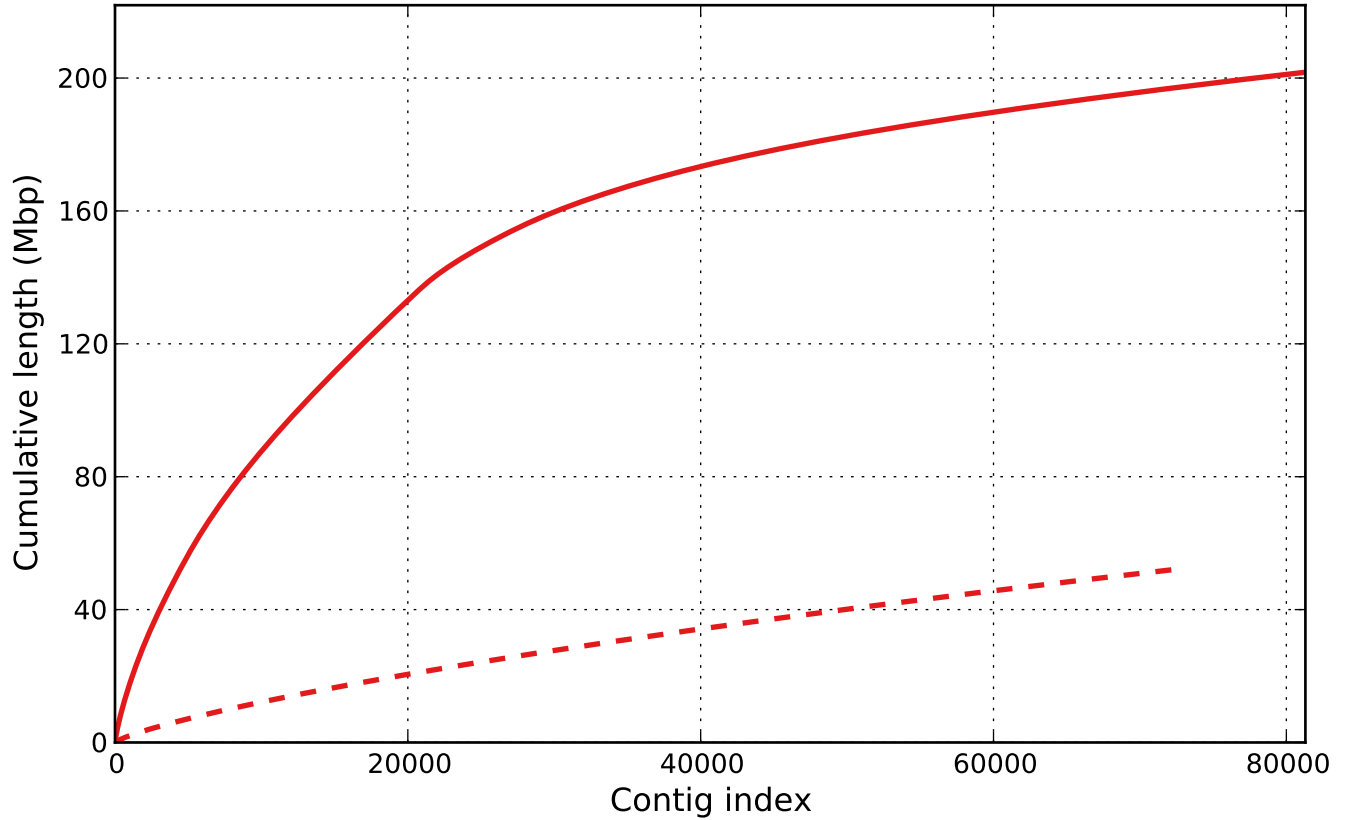
	SOAPdenovo2.scafSeq	SOAPdenovo2.scafSeq_broken
# contigs (>= 0 bp)	1244727	-
# contigs (>= 1000 bp)	42169	7435
# contigs (>= 5000 bp)	11047	3
# contigs (>= 10000 bp)	2422	0
# contigs (>= 25000 bp)	75	0
# contigs (>= 50000 bp)	1	0
Total length (>= 0 bp)	396305066	-
Total length (>= 1000 bp)	175641192	9706221
Total length (>= 5000 bp)	93023431	15626
Total length (>= 10000 bp)	33916634	0
Total length (>= 25000 bp)	2203480	0
Total length (>= 50000 bp)	59843	0
# contigs	81301	72973
Largest contig	59843	5458
Total length	201754976	52389609
GC (%)	51.75	51.75
N50	4715	694
N75	2330	579
L50	12667	27790
L75	25919	48552
# N's per 100 kbp	56632.87	2.35

All statistics are based on contigs of size  $\geq 500$  bp, unless otherwise noted (e.g., "# contigs ( $\geq 0$  bp)" and "Total length ( $\geq 0$  bp)" include all contigs).



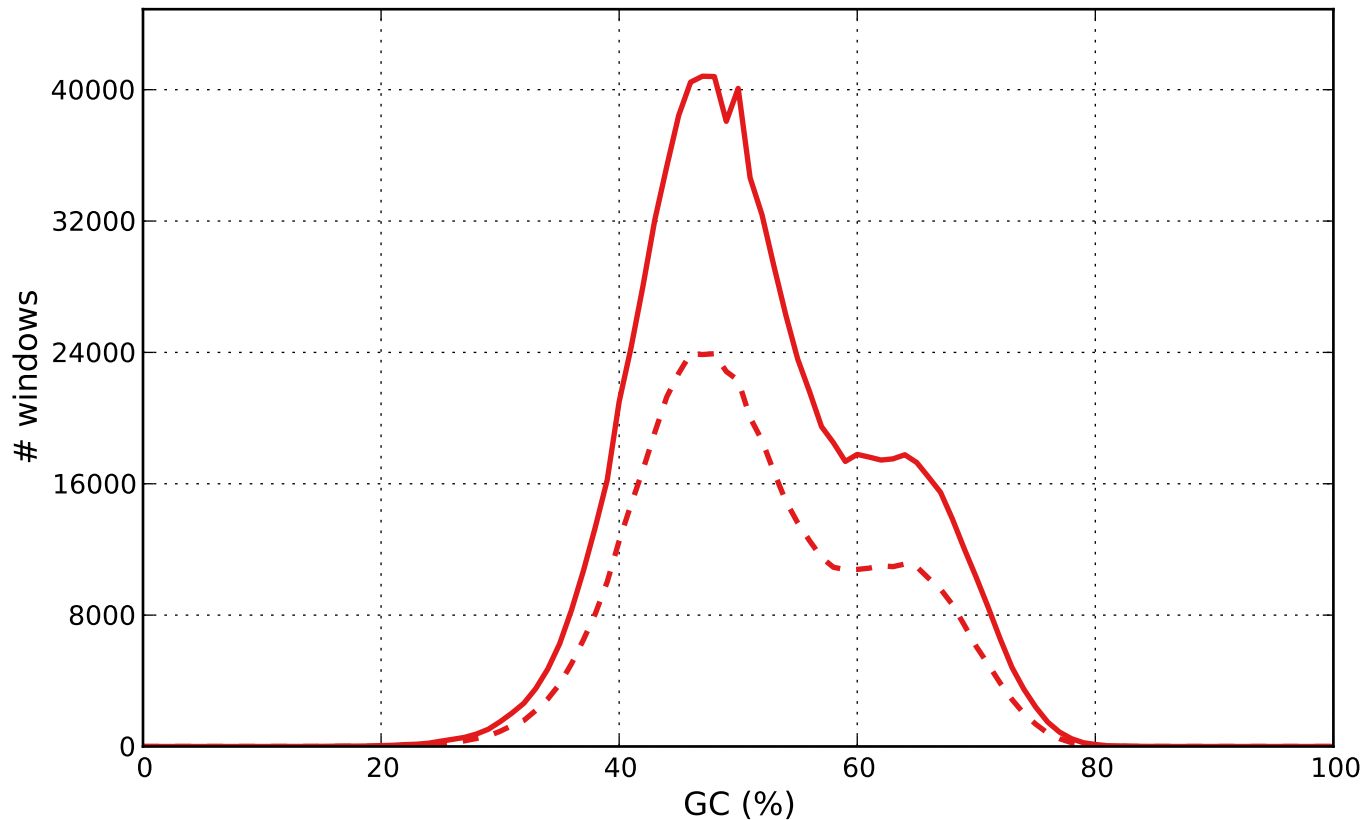
— SOAPdenovo2.scafSeq    - - SOAPdenovo2.scafSeq\_broken

Cumulative length



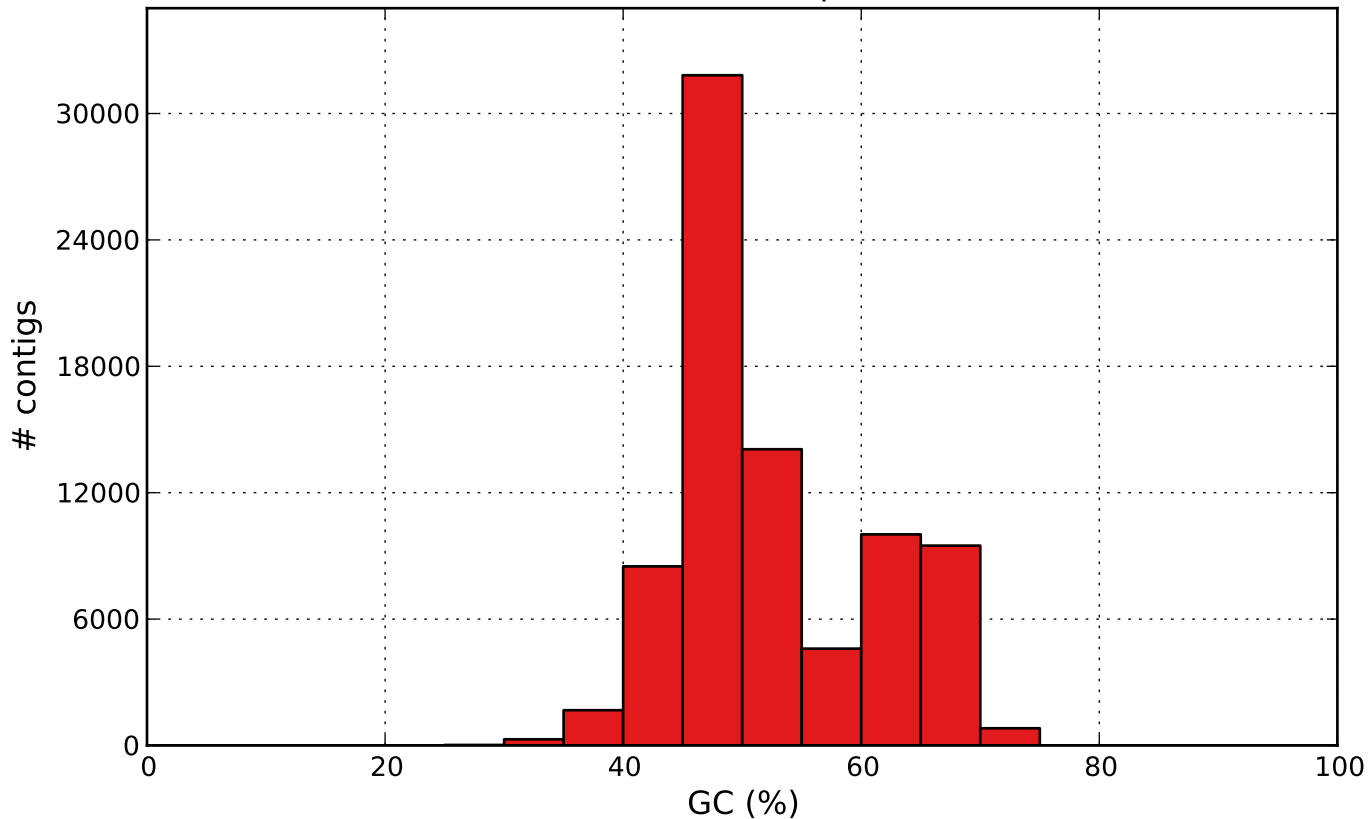
— SOAPdenovo2.scafSeq    - - SOAPdenovo2.scafSeq\_broken

GC content



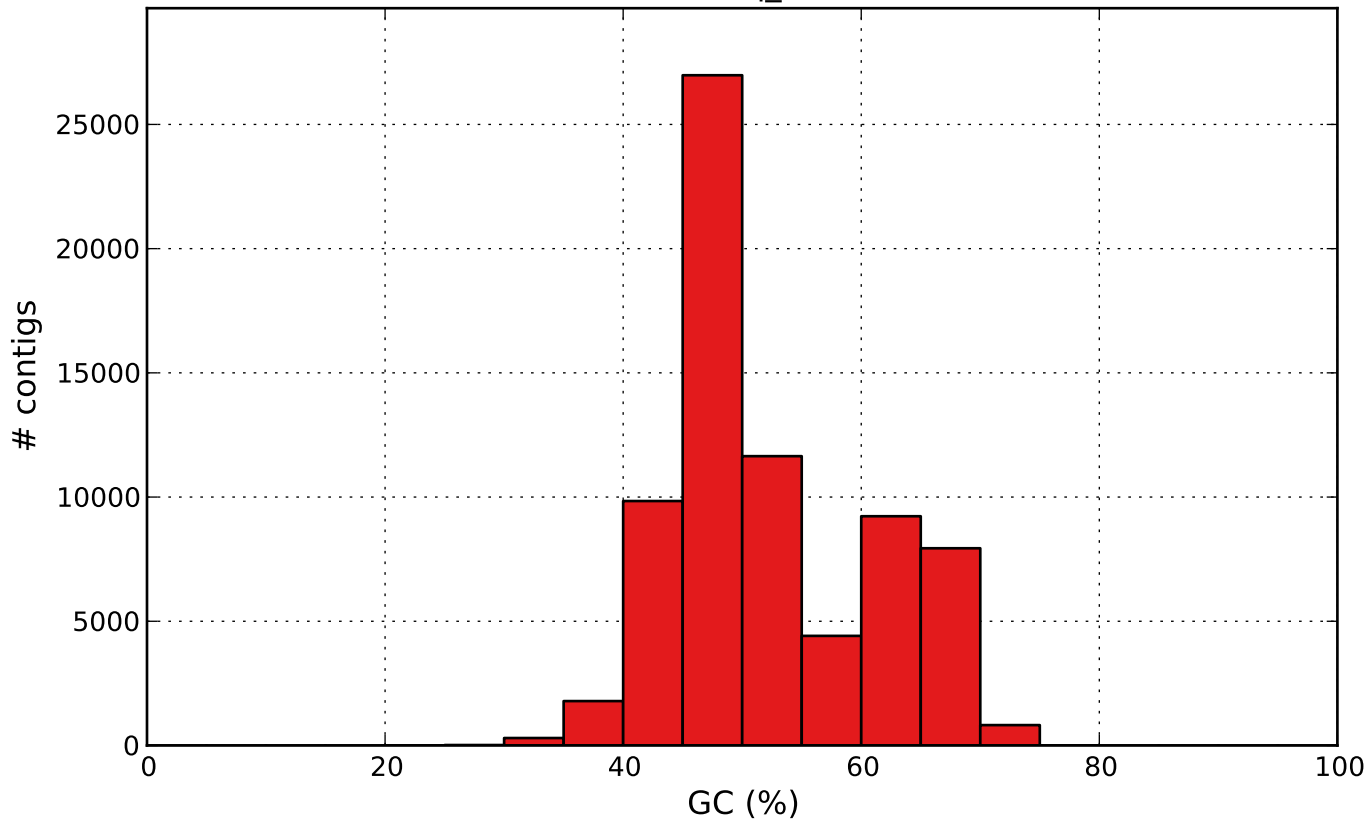
— SOAPdenovo2.scafSeq    - - - SOAPdenovo2.scafSeq\_broken

SOAPdenovo2.scafSeq GC content



SOAPdenovo2.scafSeq

SOAPdenovo2.scafSeq\_broken GC content



SOAPdenovo2.scafSeq\_broken