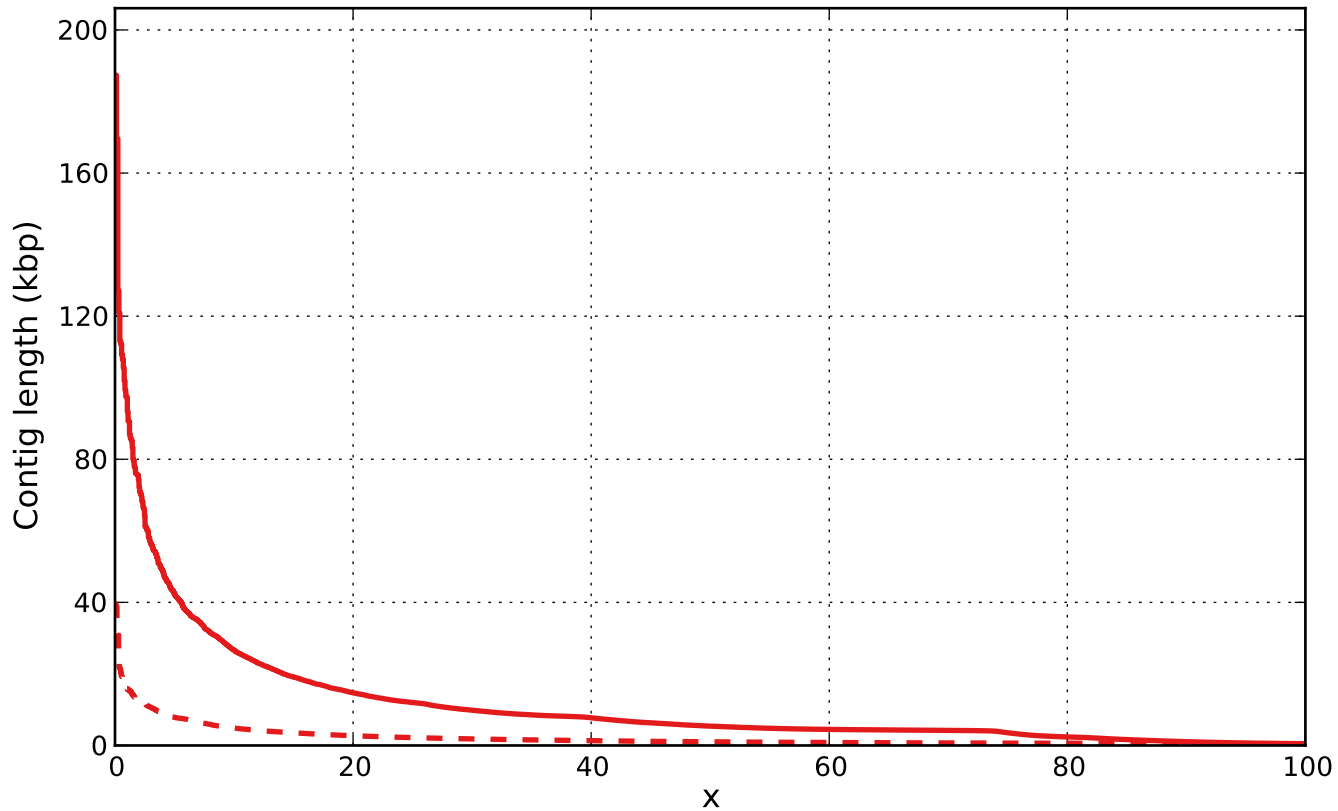


Report

	SOAPdenovo2.scafSeq	SOAPdenovo2.scafSeq_broken
# contigs (>= 0 bp)	433217	-
# contigs (>= 1000 bp)	27920	11765
# contigs (>= 5000 bp)	7383	552
# contigs (>= 10000 bp)	2325	116
# contigs (>= 25000 bp)	393	4
# contigs (>= 50000 bp)	77	0
Total length (>= 0 bp)	236222119	-
Total length (>= 1000 bp)	135643419	24311870
Total length (>= 5000 bp)	79485811	4566656
Total length (>= 10000 bp)	44279620	1626111
Total length (>= 25000 bp)	16258311	142783
Total length (>= 50000 bp)	5712342	0
# contigs	48626	47225
Largest contig	187346	39531
Total length	149570485	47623442
GC (%)	53.72	54.59
N50	5406	1024
N75	3559	657
L50	6479	11271
L75	14854	26200
# N's per 100 kbp	55040.28	3.80

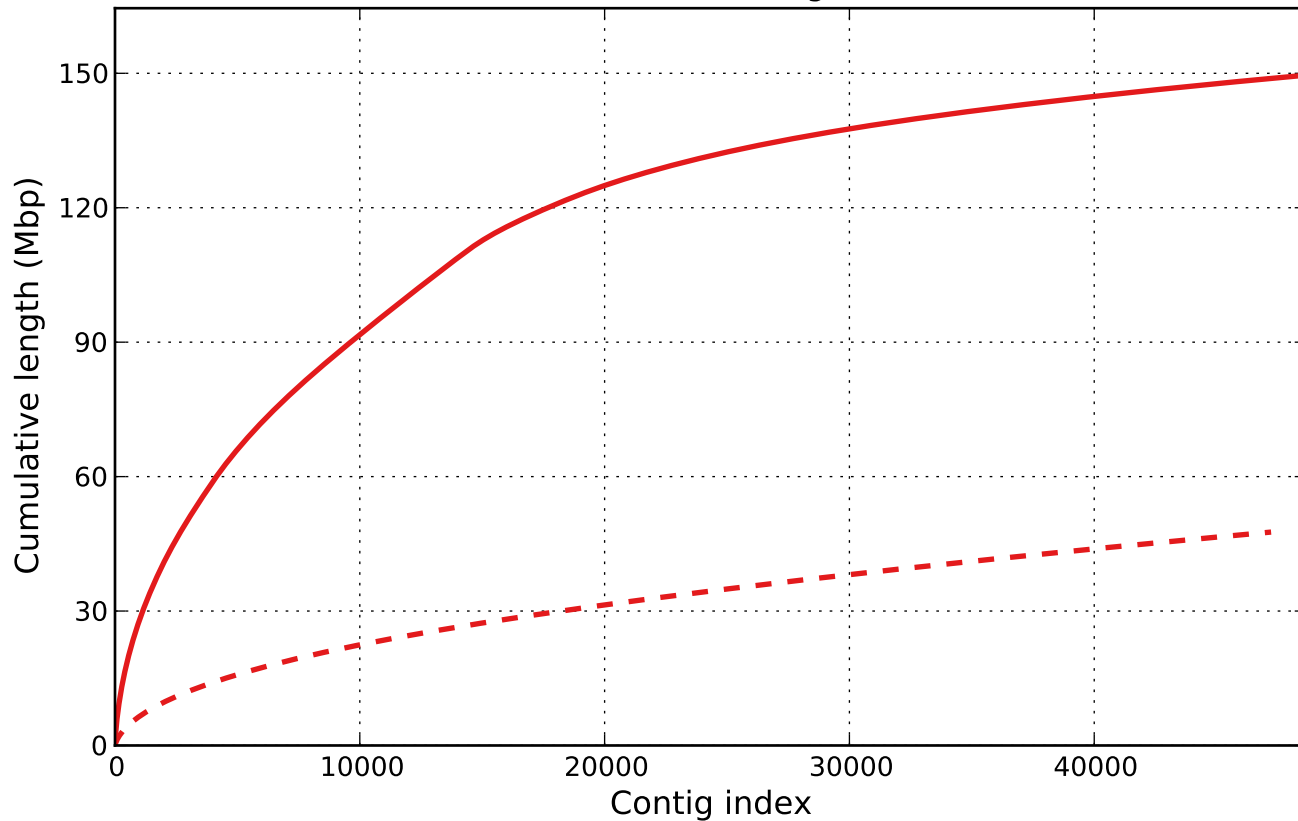
All statistics are based on contigs of size ≥ 500 bp, unless otherwise noted (e.g., "# contigs (≥ 0 bp)" and "Total length (≥ 0 bp)" include all contigs).

Nx



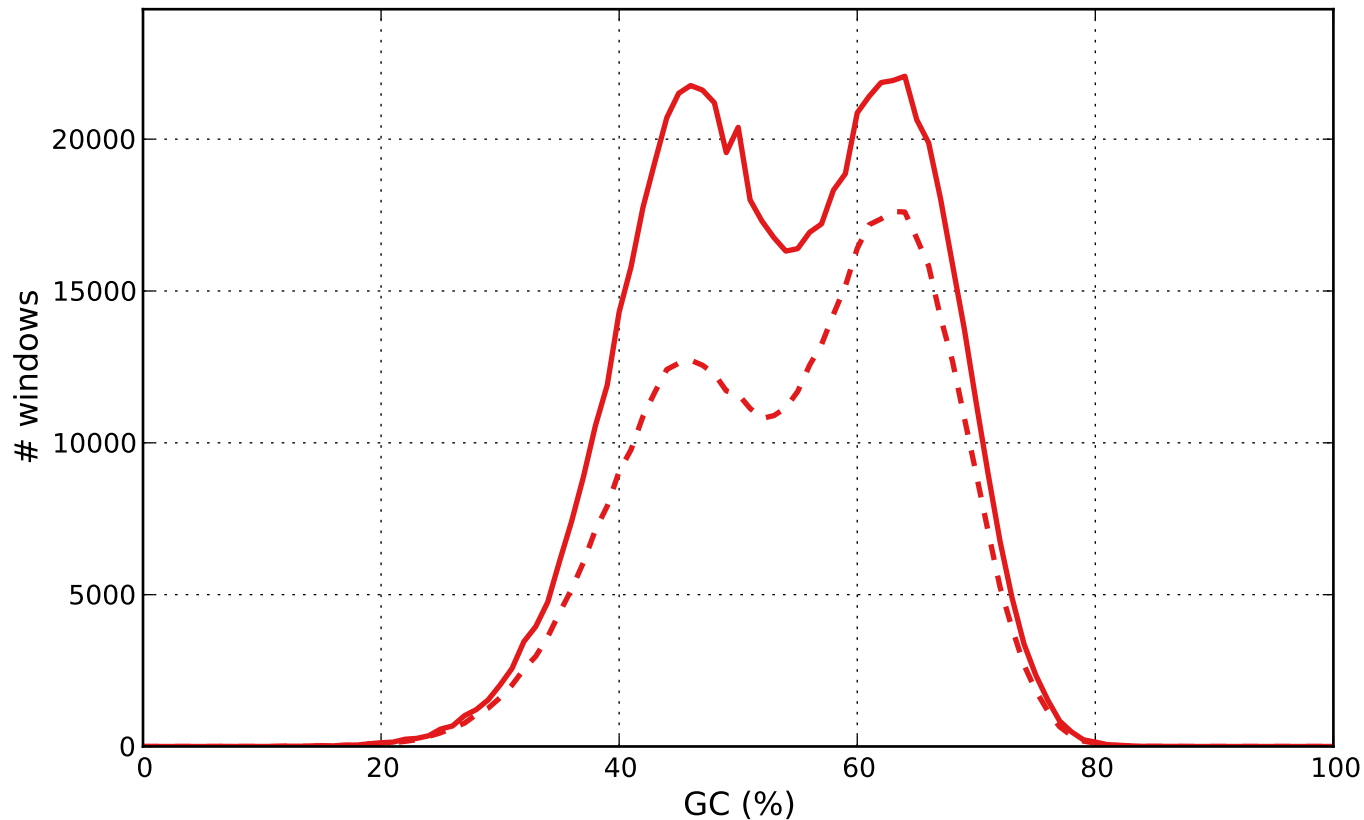
— SOAPdenovo2.scafSeq - - SOAPdenovo2.scafSeq_broken

Cumulative length



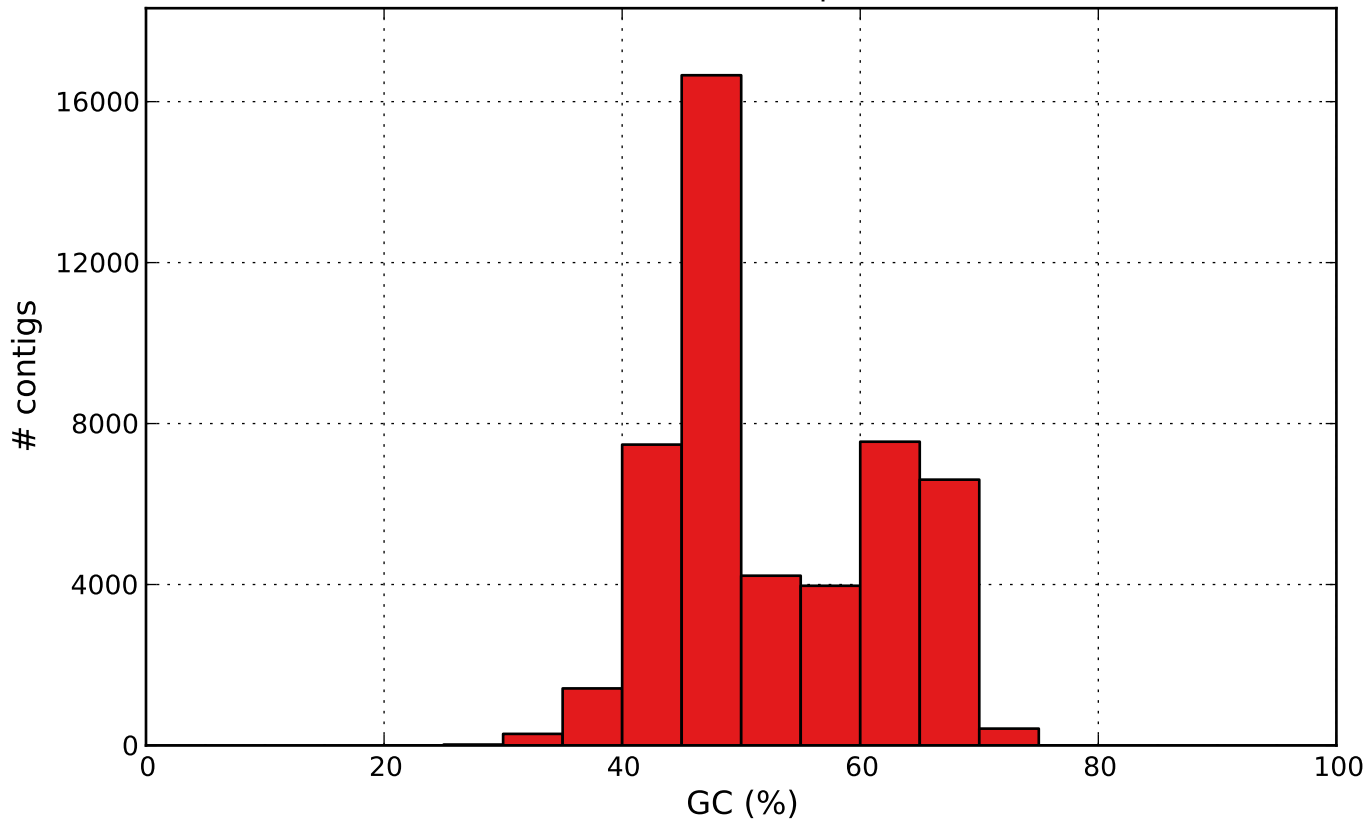
— SOAPdenovo2.scafSeq - - SOAPdenovo2.scafSeq_broken

GC content



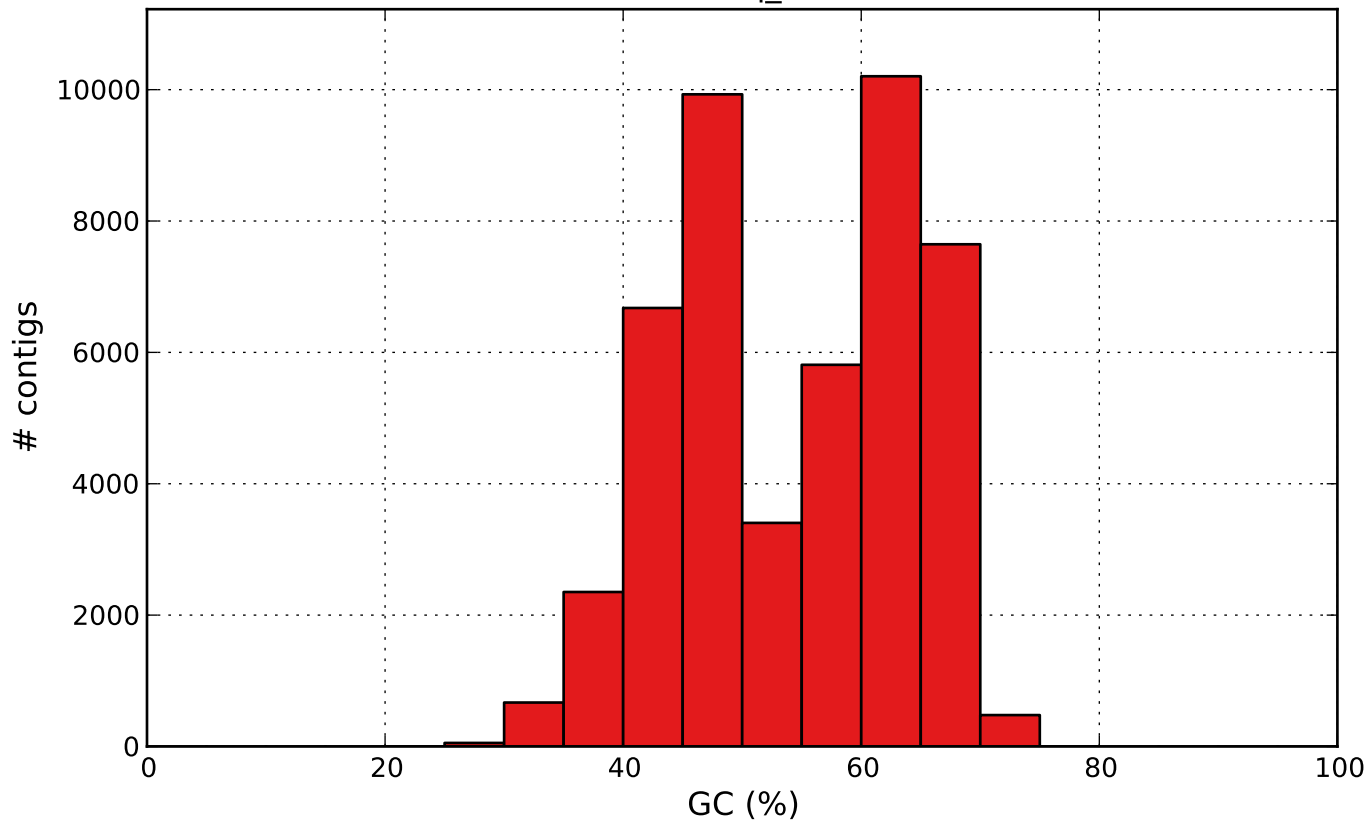
— SOAPdenovo2.scafSeq - - SOAPdenovo2.scafSeq_broken

SOAPdenovo2.scafSeq GC content



SOAPdenovo2.scafSeq

SOAPdenovo2.scafSeq_broken GC content



SOAPdenovo2.scafSeq_broken