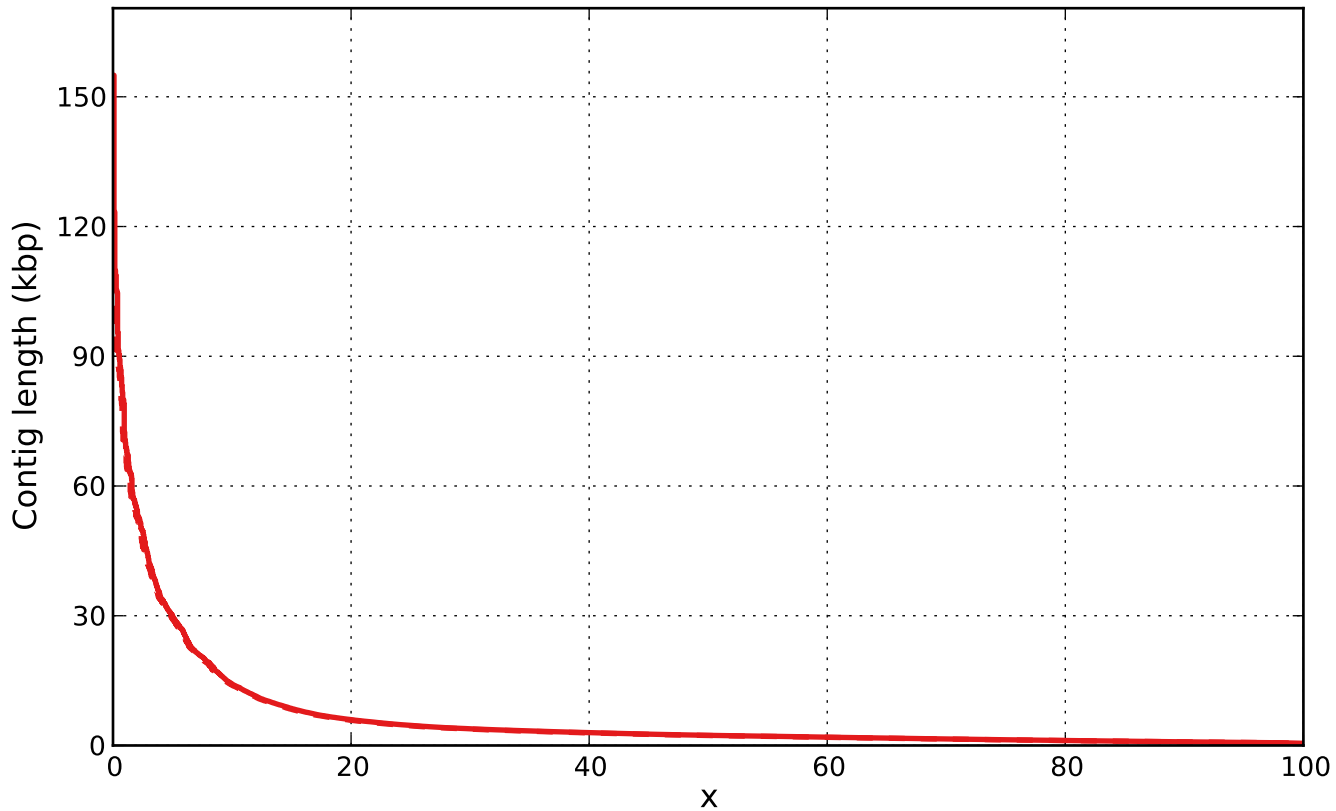


Report

	scaffolds	scaffolds_broken
# contigs (>= 0 bp)	414432	-
# contigs (>= 1000 bp)	60710	61126
# contigs (>= 5000 bp)	3945	3861
# contigs (>= 10000 bp)	1166	1154
# contigs (>= 25000 bp)	267	265
# contigs (>= 50000 bp)	63	61
Total length (>= 0 bp)	210768575	-
Total length (>= 1000 bp)	155641092	154893263
Total length (>= 5000 bp)	42900285	41969092
Total length (>= 10000 bp)	24440003	24008828
Total length (>= 25000 bp)	11241040	10942125
Total length (>= 50000 bp)	4394766	4117630
# contigs	97893	99053
Largest contig	154985	123369
Total length	183651923	183460965
GC (%)	54.78	54.78
N50	2347	2307
N75	1323	1302
L50	19221	19612
L75	45146	45973
# N's per 100 kbp	44.51	0.00

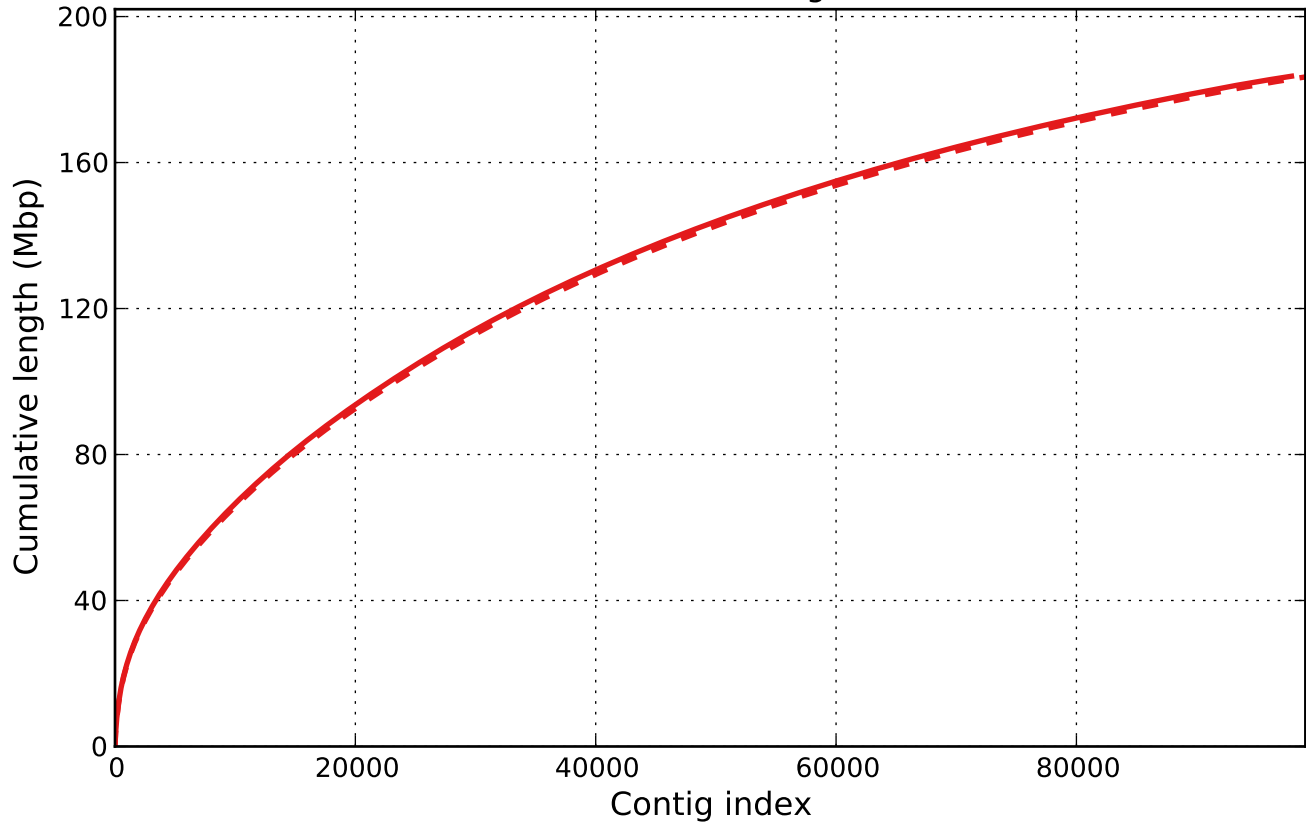
All statistics are based on contigs of size ≥ 500 bp, unless otherwise noted (e.g., "# contigs (≥ 0 bp)" and "Total length (≥ 0 bp)" include all contigs).

Nx

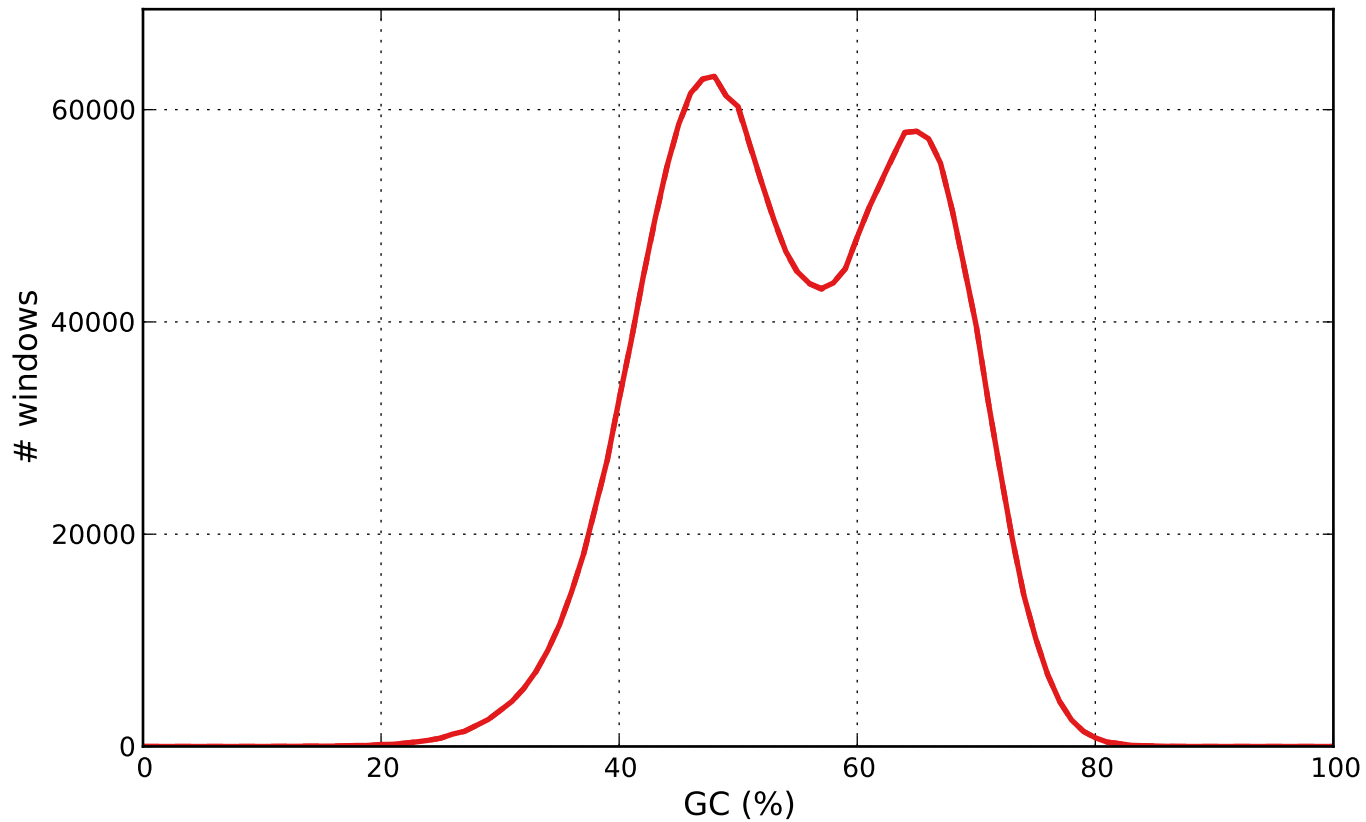


— scaffolds - - scaffolds_broken

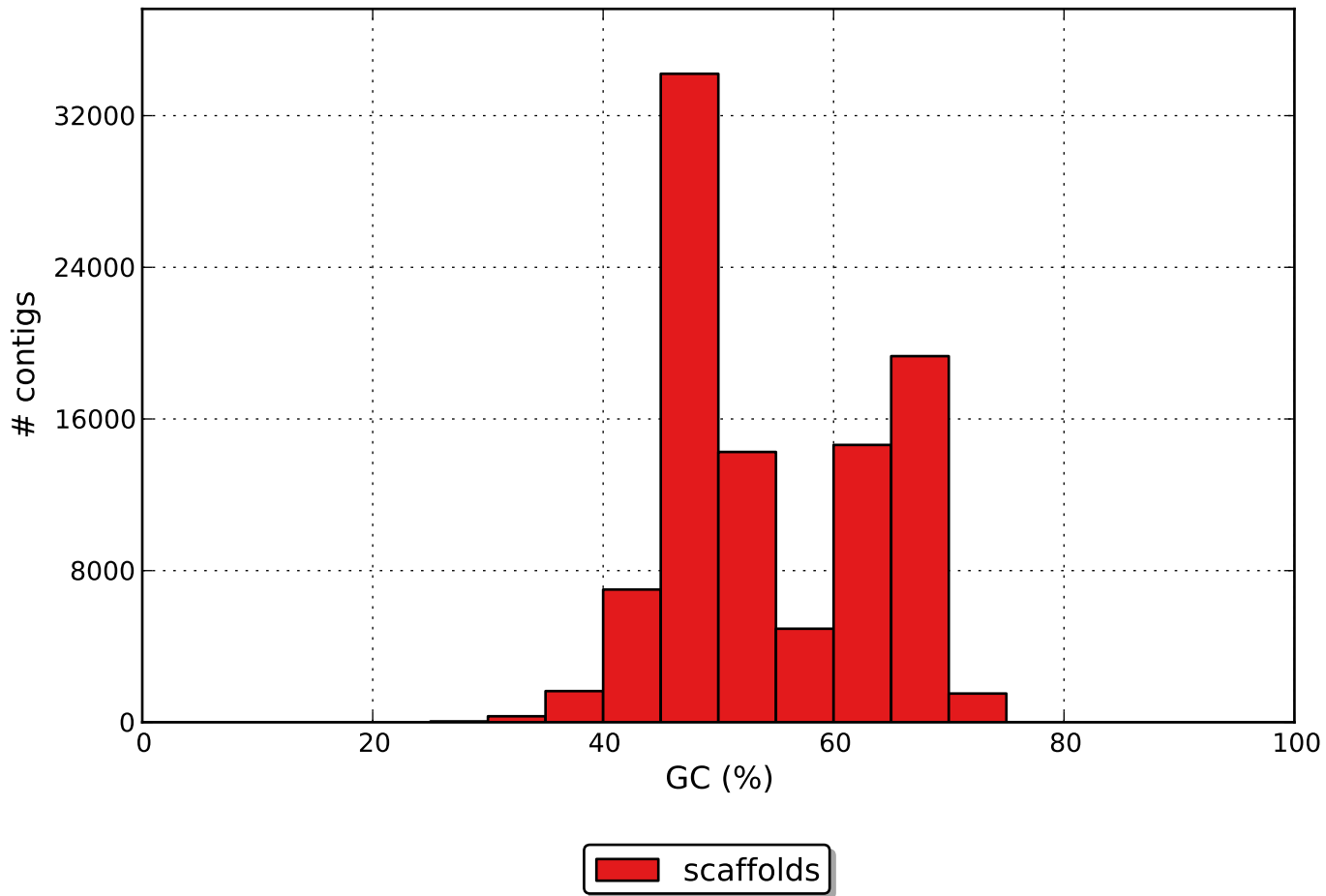
Cumulative length



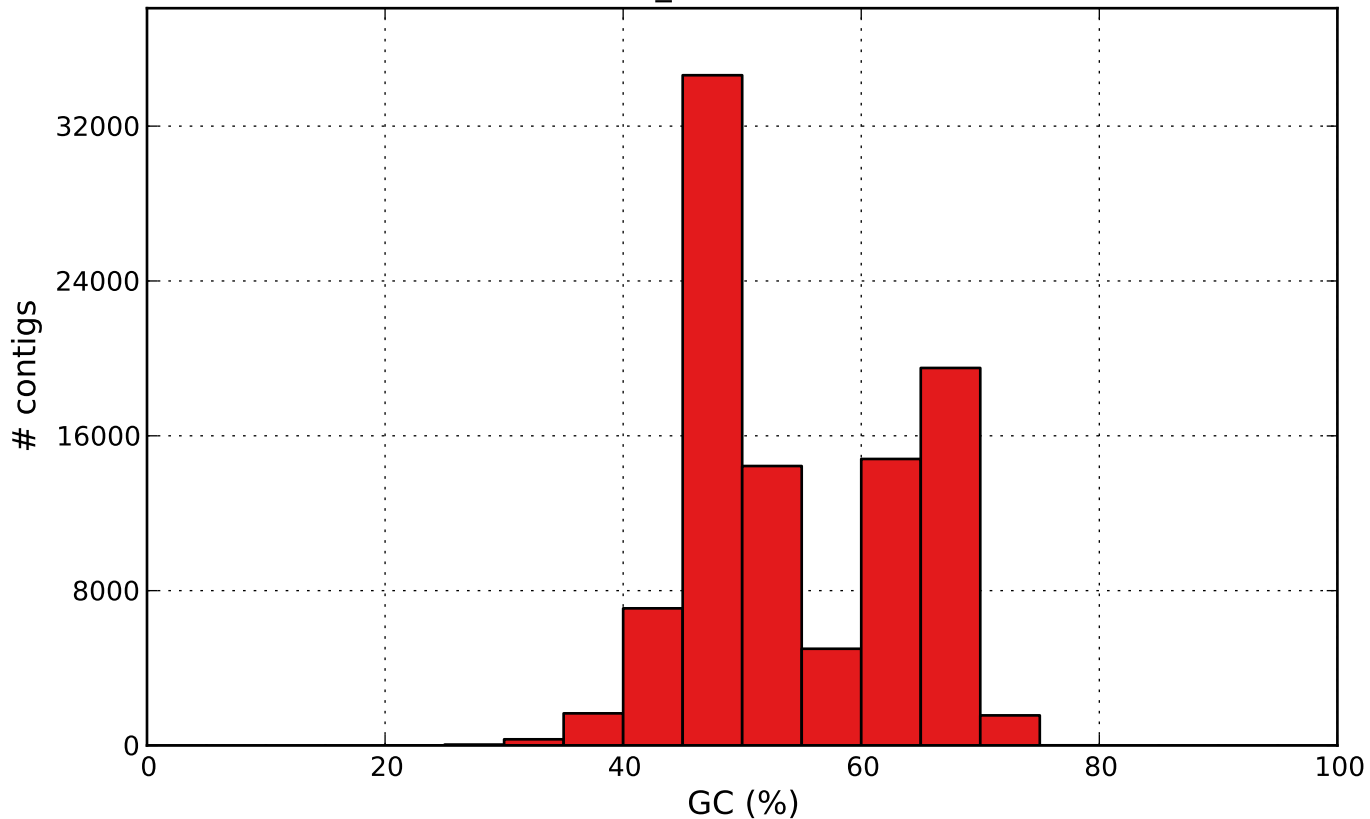
GC content



scaffolds GC content

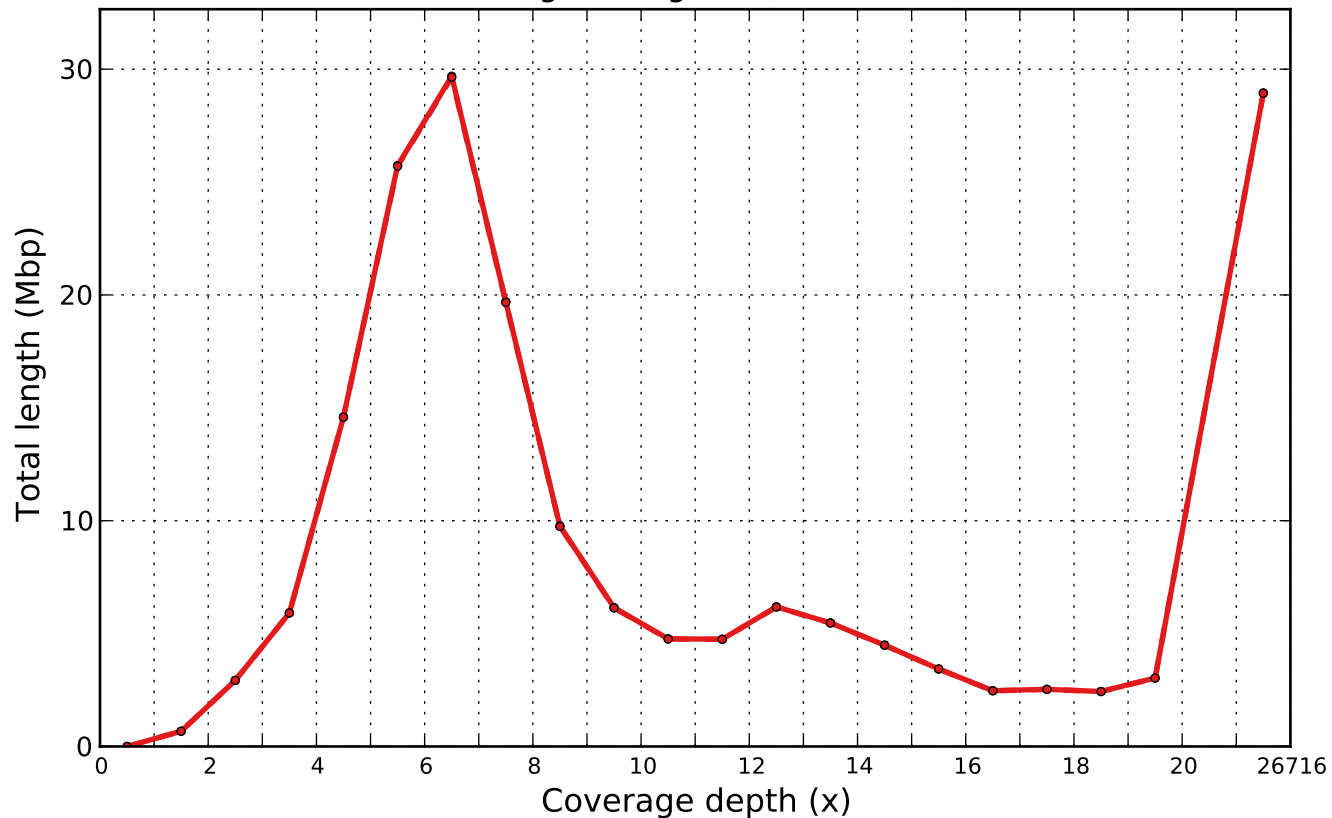


scaffolds_broken GC content



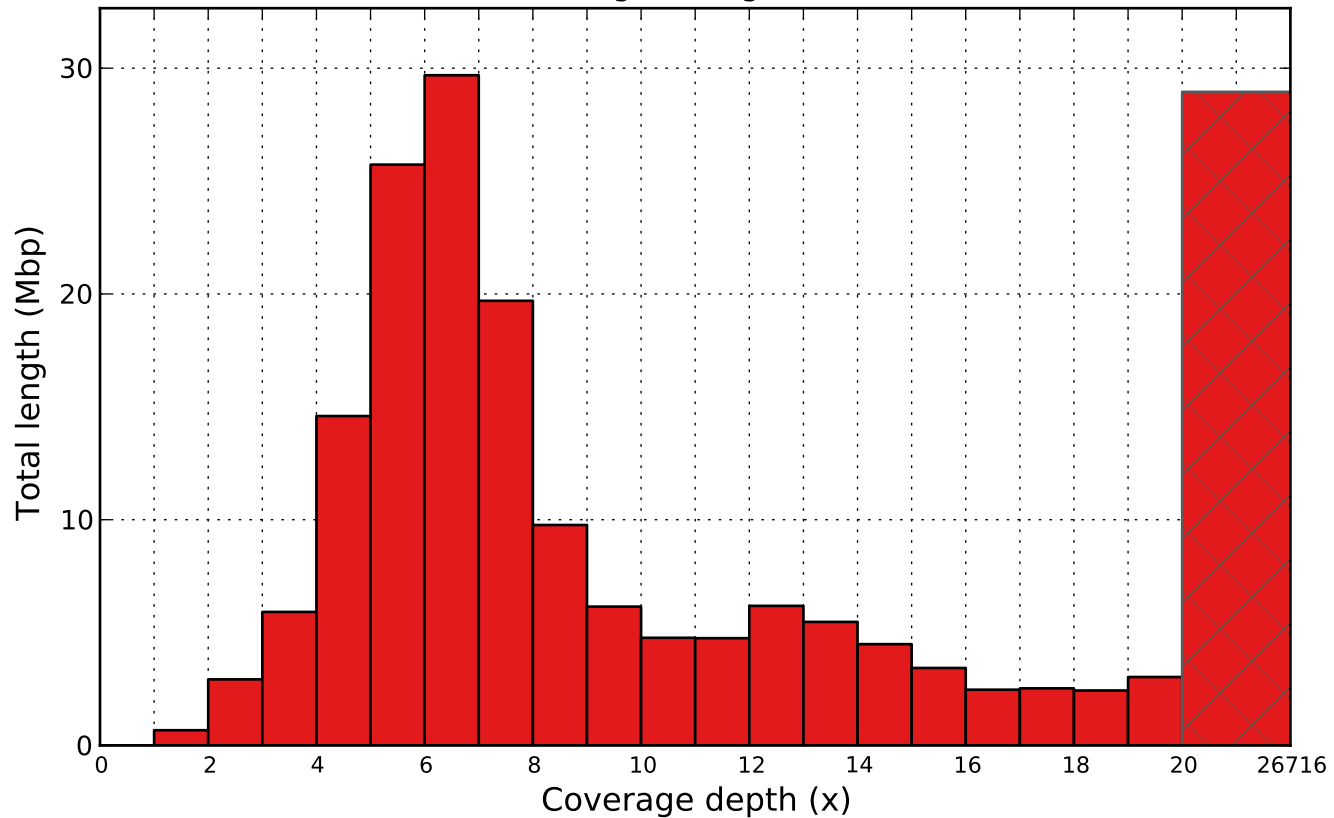
scaffolds_broken

Coverage histogram (bin size: 1x)



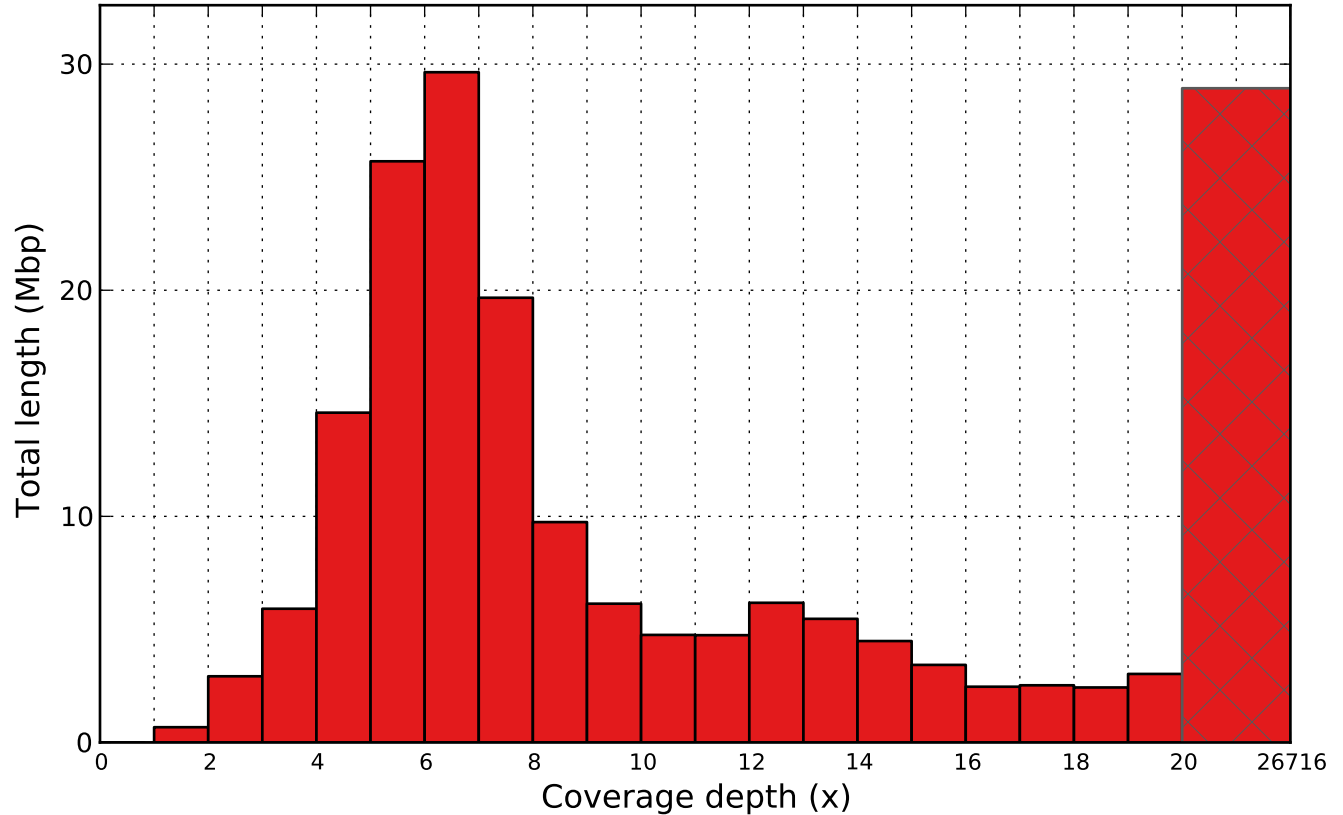
● scaffolds - - scaffolds_broken

scaffolds coverage histogram (bin size: 1x)



scaffolds

scaffolds_broken coverage histogram (bin size: 1x)



scaffolds_broken