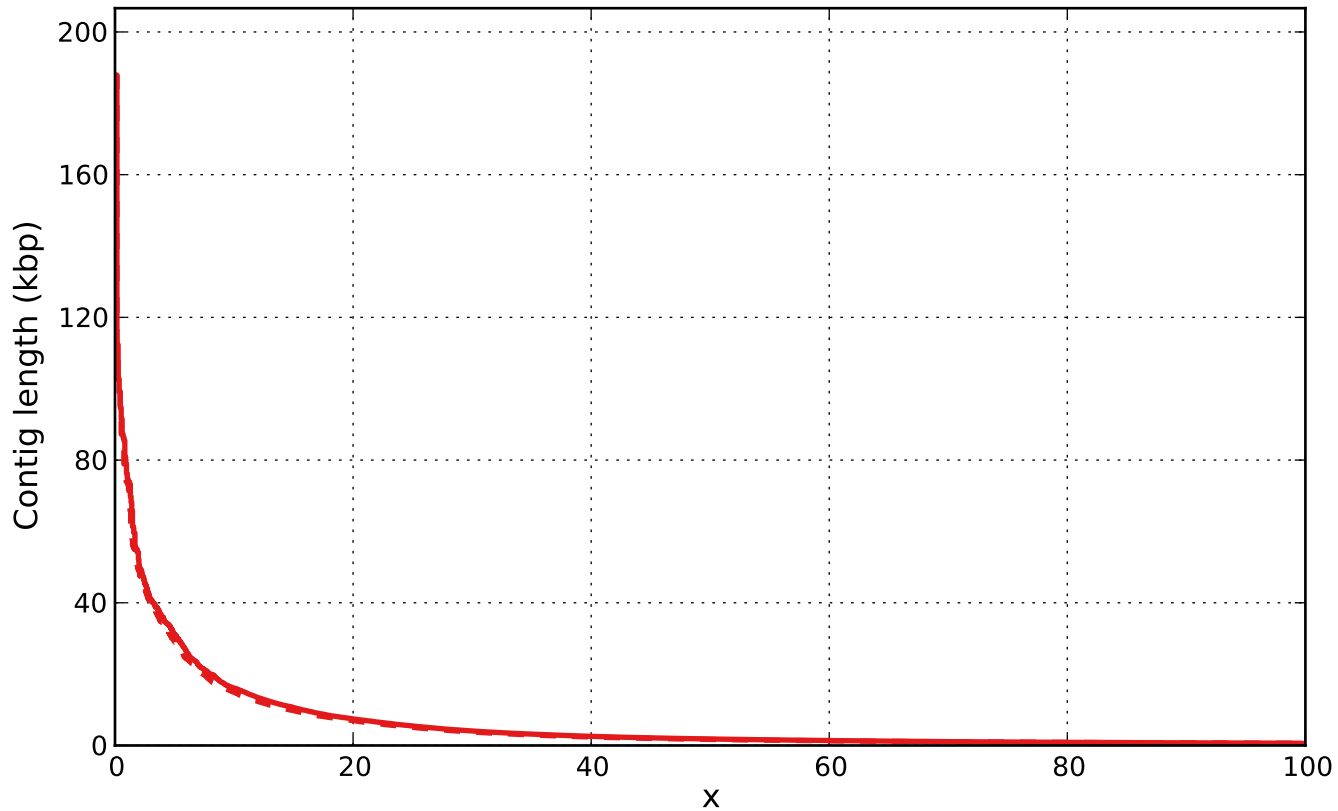


Report

	scaffolds	scaffolds_broken
# contigs (≥ 0 bp)	157467	-
# contigs (≥ 1000 bp)	33261	33463
# contigs (≥ 5000 bp)	2707	2629
# contigs (≥ 10000 bp)	912	855
# contigs (≥ 25000 bp)	168	158
# contigs (≥ 50000 bp)	31	29
Total length (≥ 0 bp)	122608214	-
Total length (≥ 1000 bp)	84399815	82524071
Total length (≥ 5000 bp)	30329750	28933122
Total length (≥ 10000 bp)	18011123	16746244
Total length (≥ 25000 bp)	7122923	6650190
Total length (≥ 50000 bp)	2356830	2179803
# contigs	72277	74771
Largest contig	187873	187873
Total length	114723812	114648123
GC (%)	56.01	56.01
N50	1820	1698
N75	971	943
L50	12613	13574
L75	34929	37028
# N's per 100 kbp	43.71	0.00

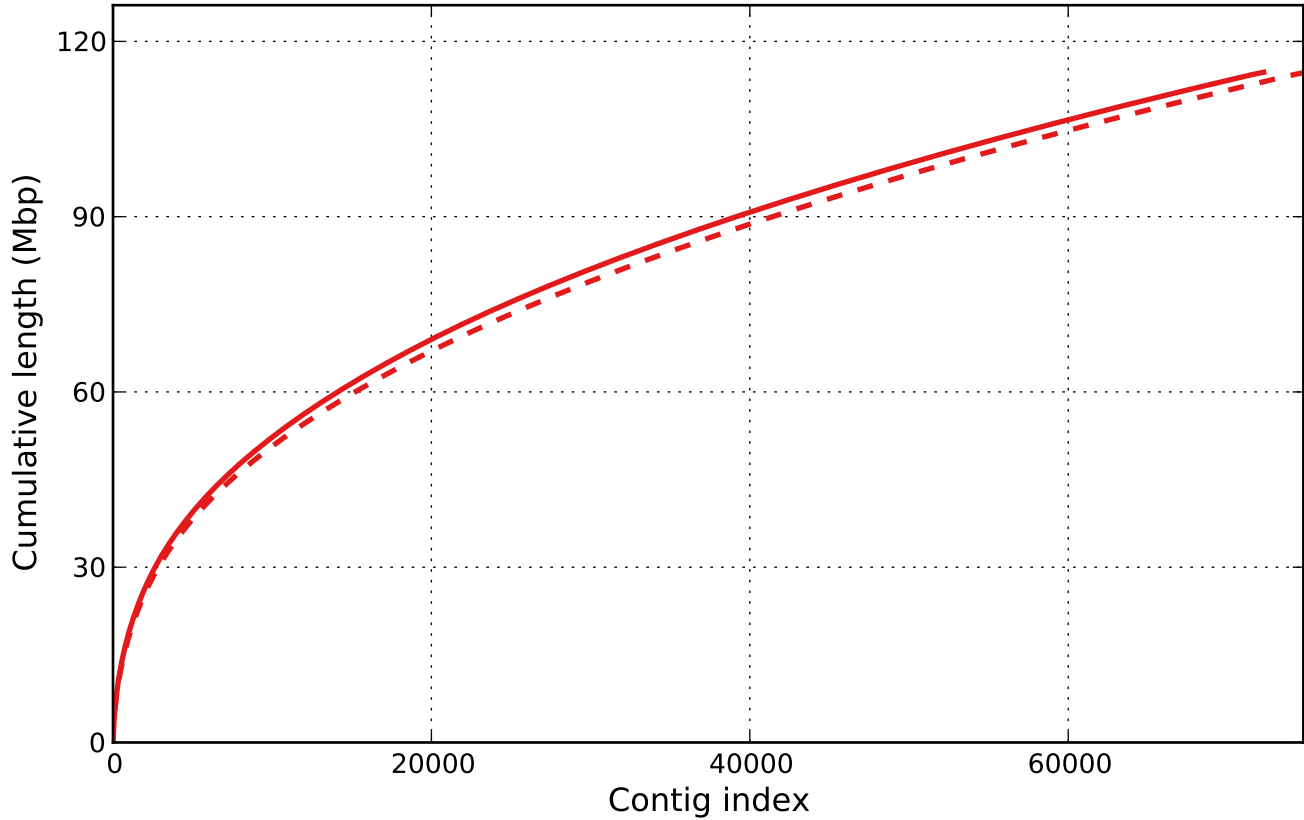
All statistics are based on contigs of size ≥ 500 bp, unless otherwise noted (e.g., "# contigs (≥ 0 bp)" and "Total length (≥ 0 bp)" include all contigs).

Nx

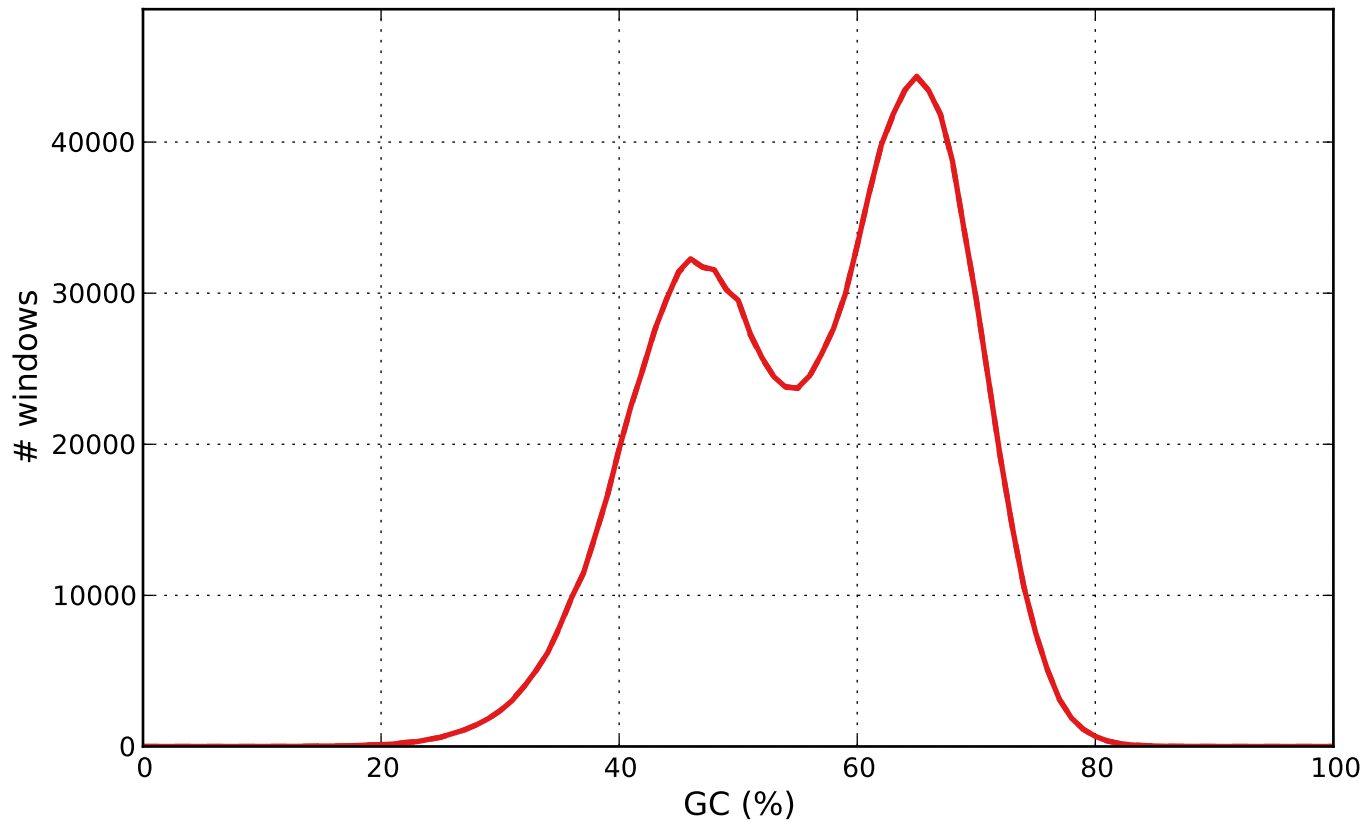


— scaffolds - - scaffolds_broken

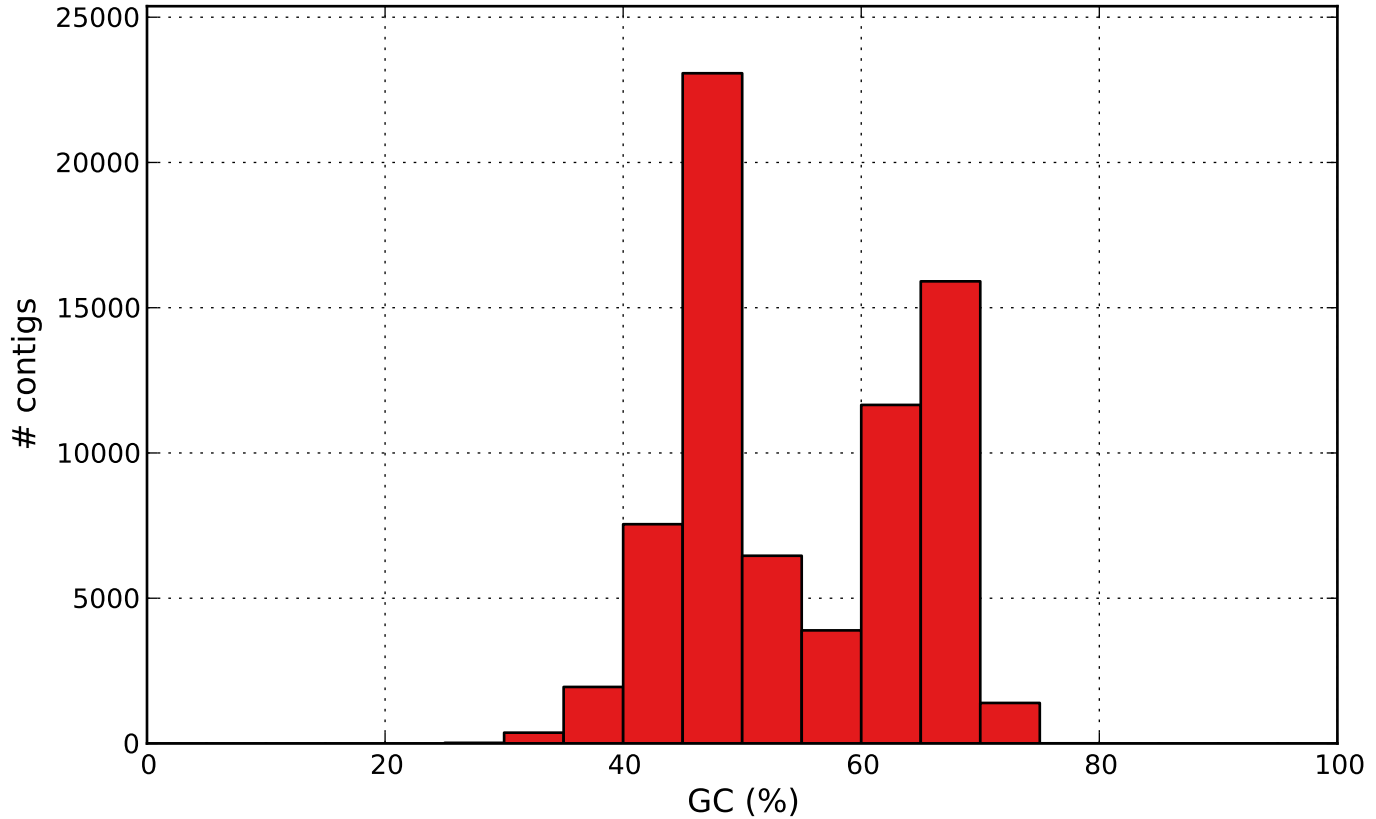
Cumulative length



GC content

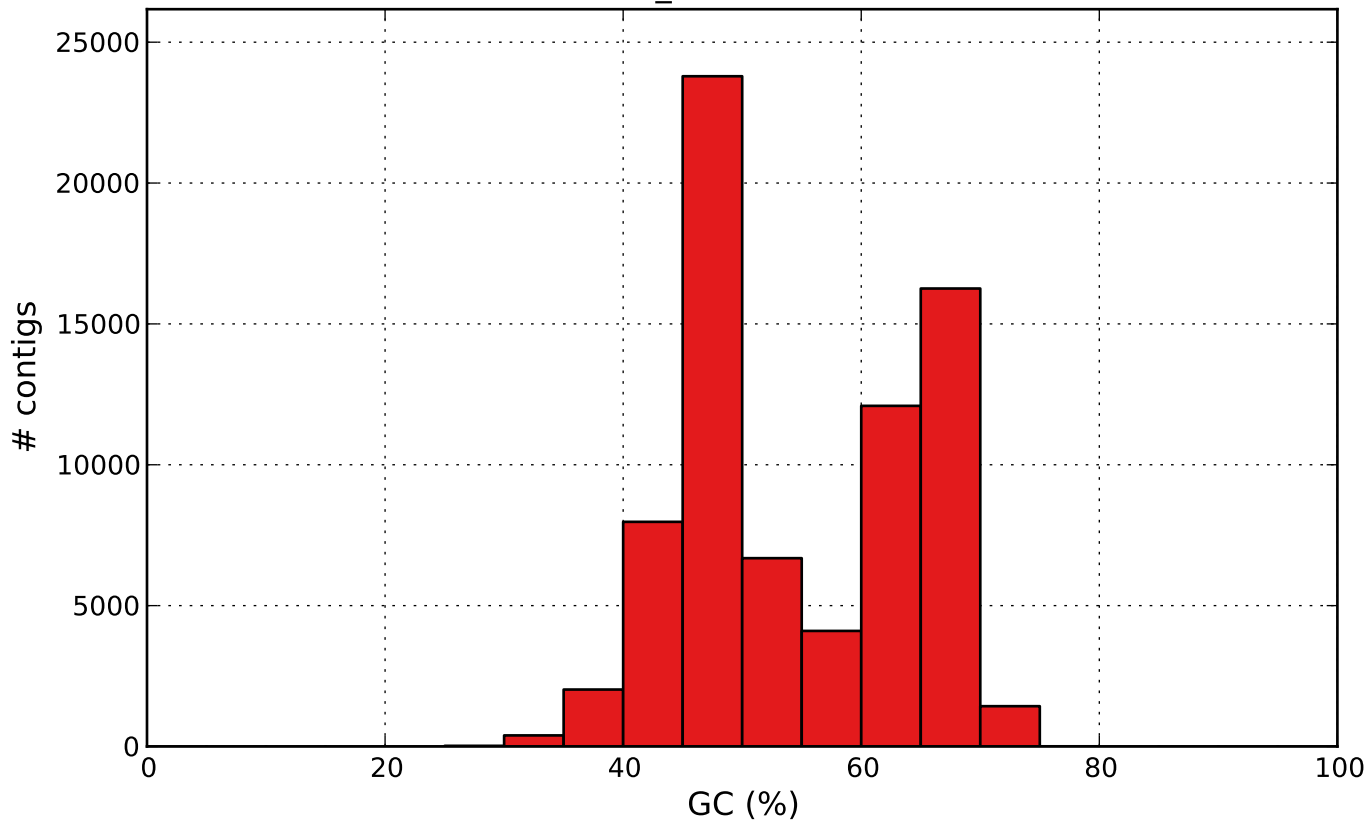


scaffolds GC content



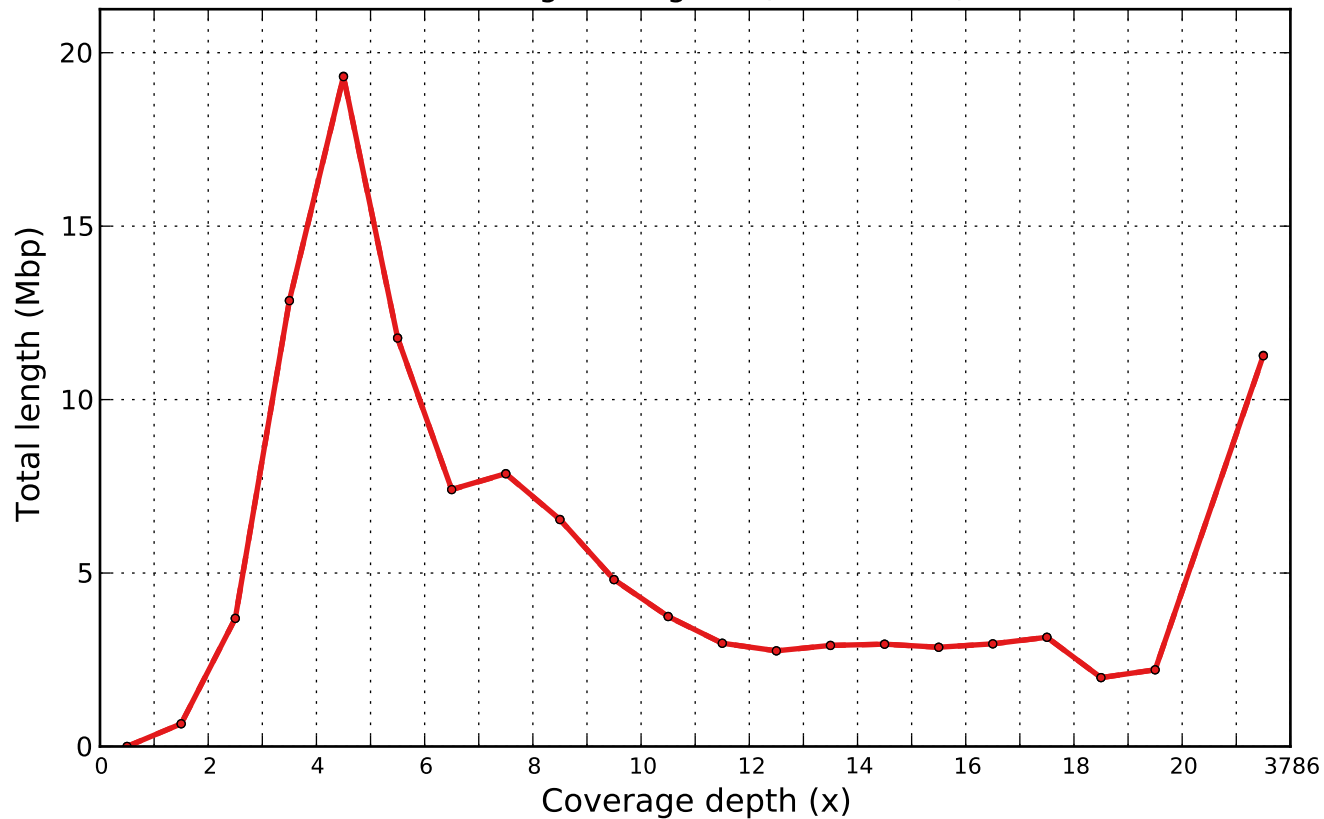
scaffolds

scaffolds_broken GC content



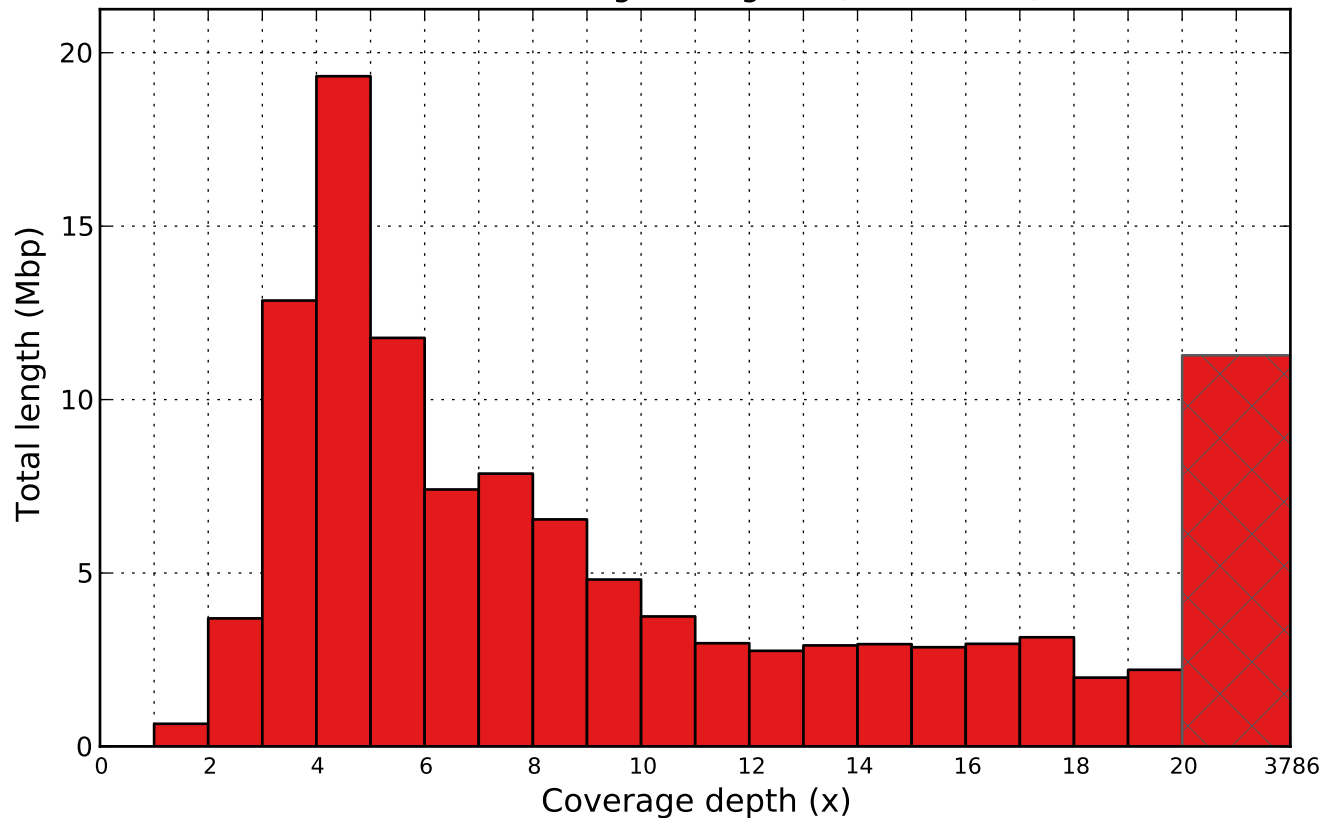
scaffolds_broken

Coverage histogram (bin size: 1x)



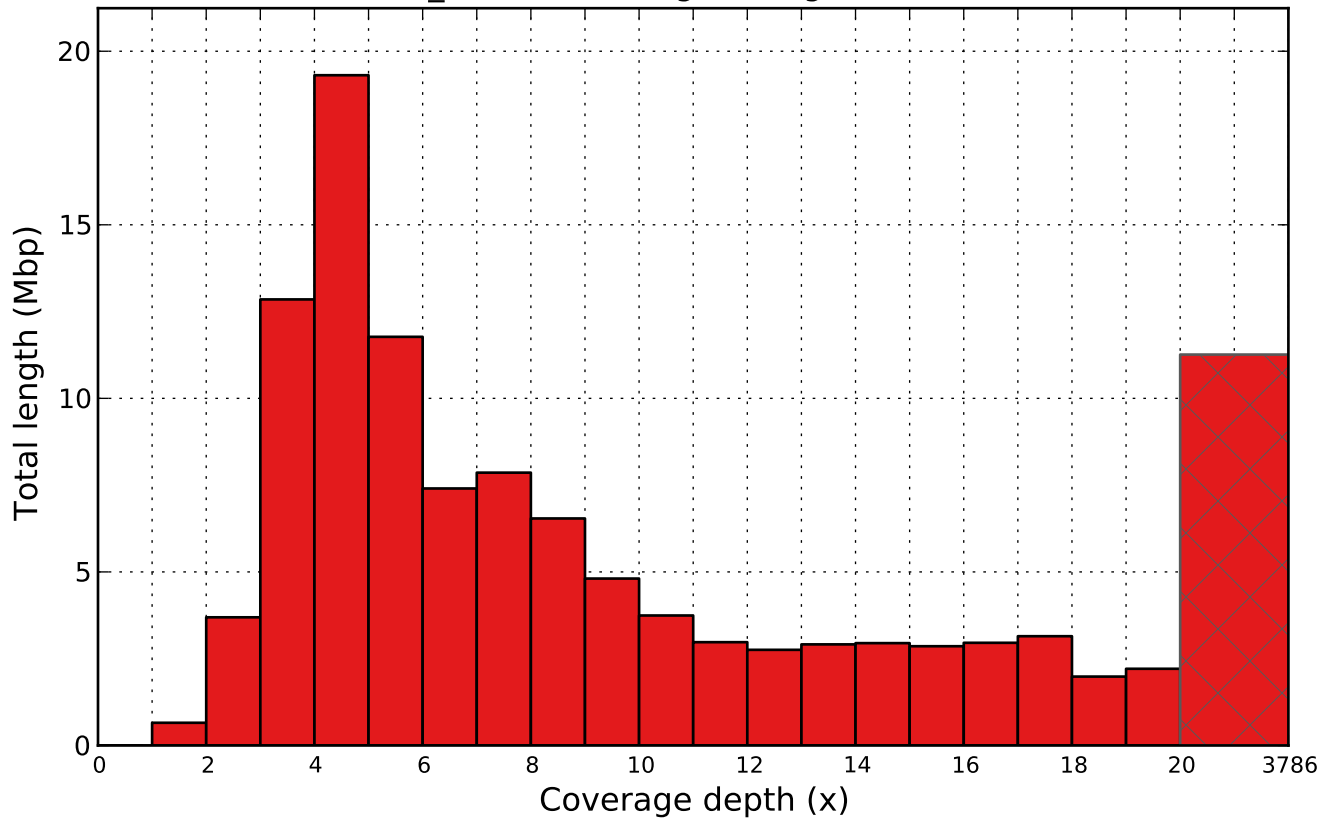
●— scaffolds - - - ● scaffolds_broken

scaffolds coverage histogram (bin size: 1x)



scaffolds

scaffolds_broken coverage histogram (bin size: 1x)



scaffolds_broken