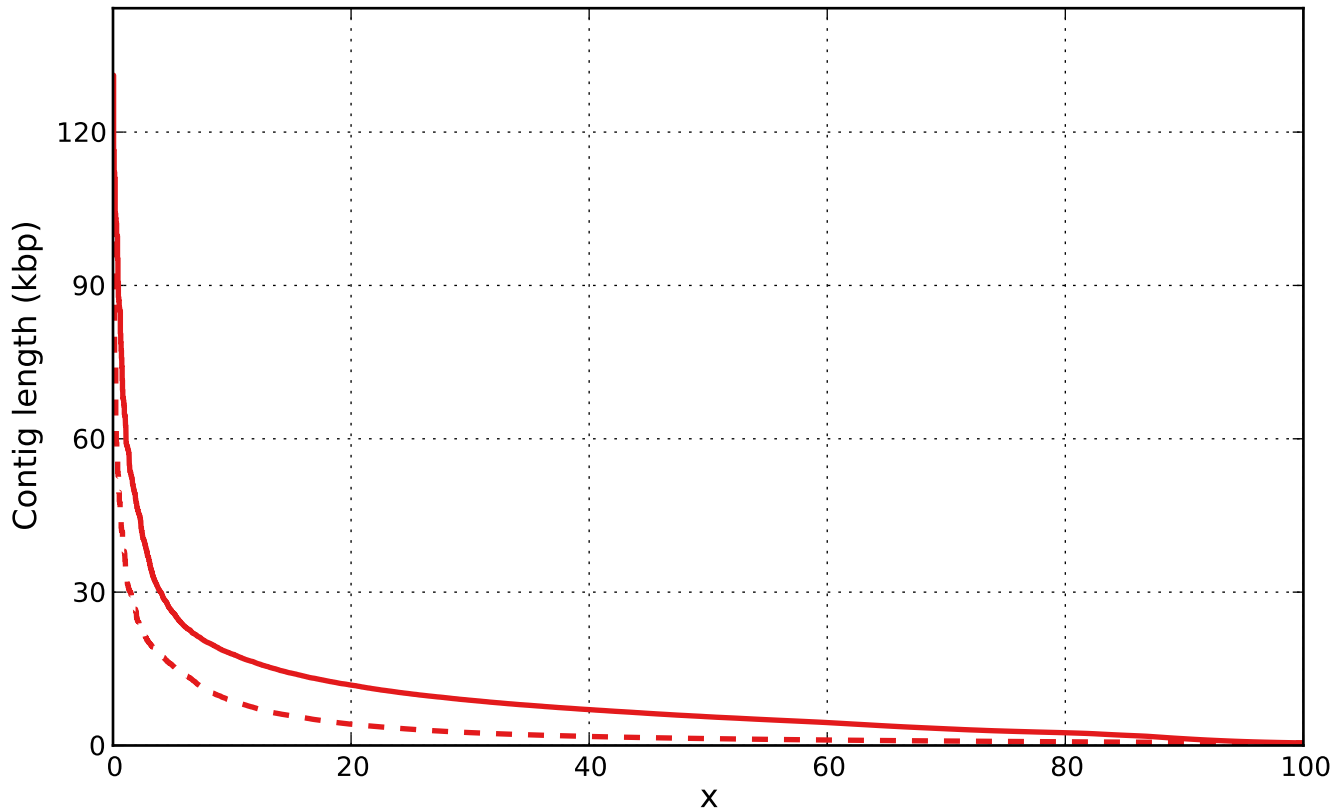


Report

	SOAPdenovo2.scafSeq	SOAPdenovo2.scafSeq_broken
# contigs (>= 0 bp)	460832	-
# contigs (>= 1000 bp)	52963	42521
# contigs (>= 5000 bp)	15310	2650
# contigs (>= 10000 bp)	4029	754
# contigs (>= 25000 bp)	348	78
# contigs (>= 50000 bp)	65	11
Total length (>= 0 bp)	341557143	-
Total length (>= 1000 bp)	238700704	94617133
Total length (>= 5000 bp)	142785220	25694191
Total length (>= 10000 bp)	65449439	12909605
Total length (>= 25000 bp)	13809407	2960585
Total length (>= 50000 bp)	4528785	745412
# contigs	81683	122248
Largest contig	131125	110960
Total length	258047143	149486868
GC (%)	54.98	55.25
N50	5616	1346
N75	2807	793
L50	12713	25253
L75	28913	62248
# N's per 100 kbp	31576.15	27.95

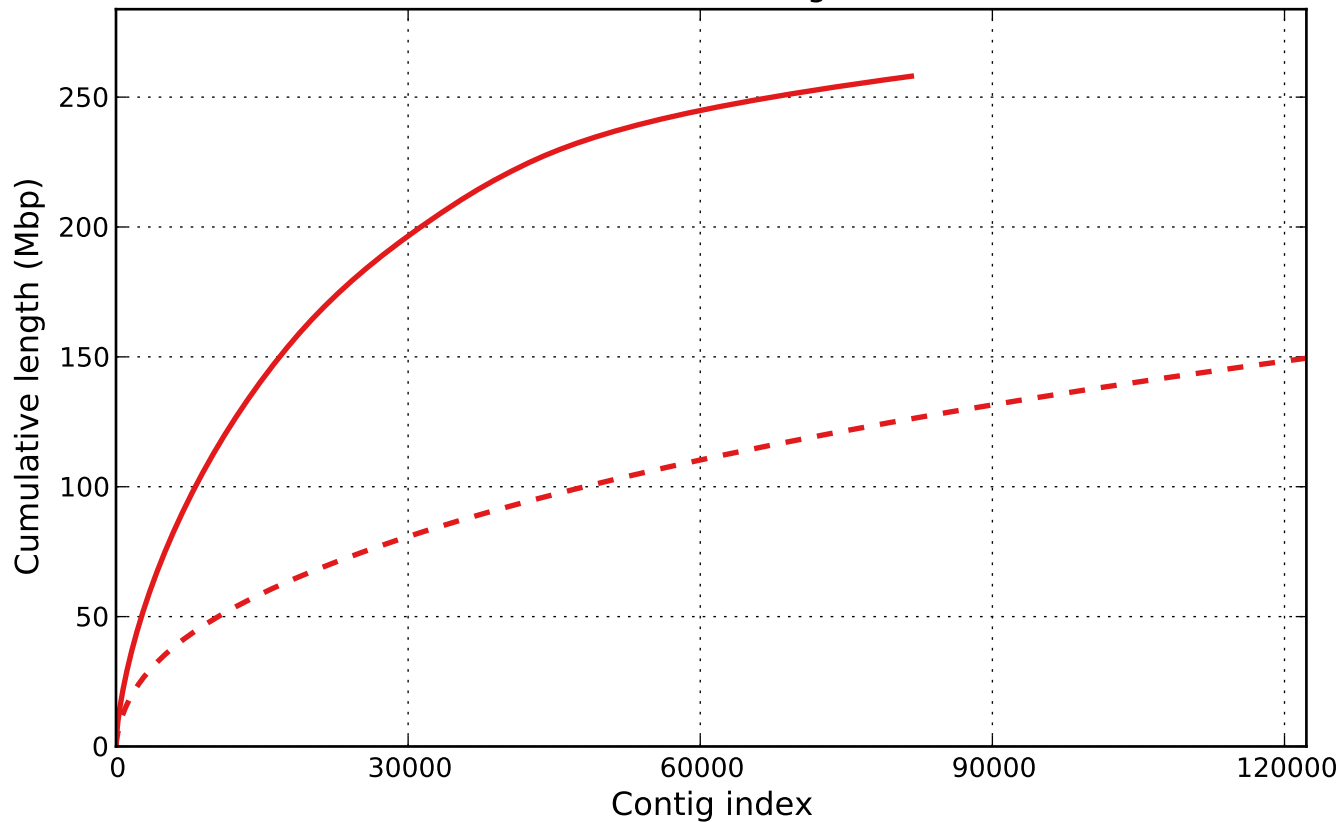
All statistics are based on contigs of size ≥ 500 bp, unless otherwise noted (e.g., "# contigs (≥ 0 bp)" and "Total length (≥ 0 bp)" include all contigs).

Nx



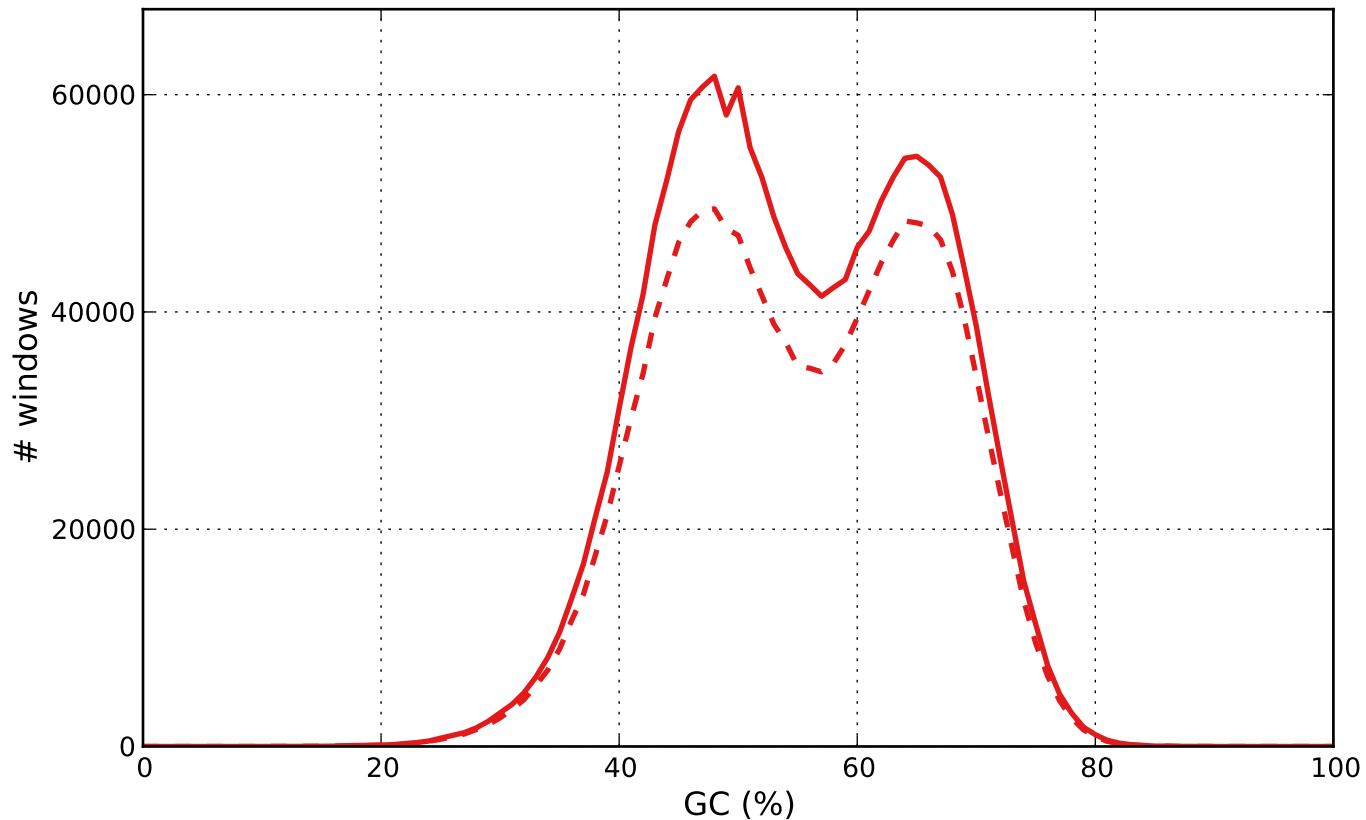
— SOAPdenovo2.scafSeq - - SOAPdenovo2.scafSeq_broken

Cumulative length



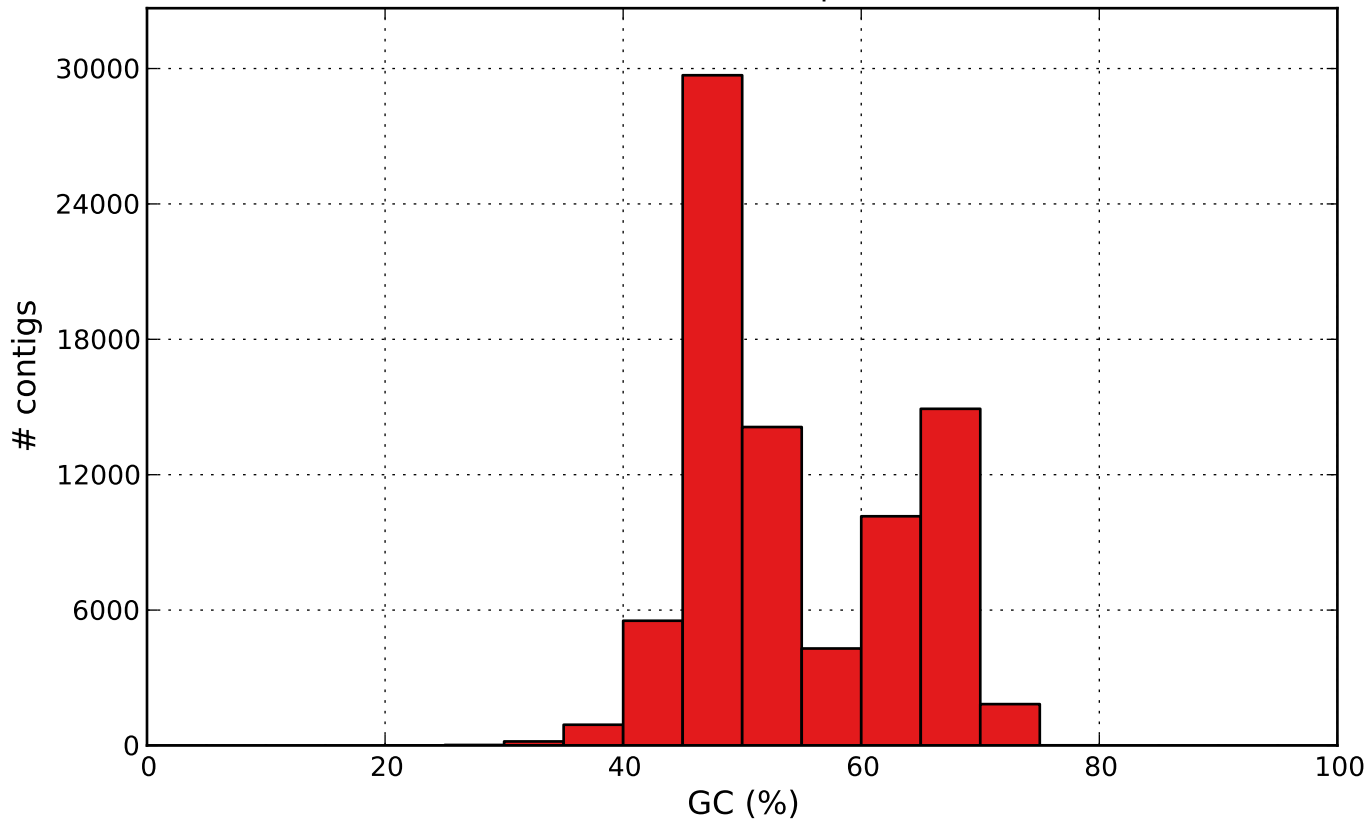
— SOAPdenovo2.scafSeq - - SOAPdenovo2.scafSeq_broken

GC content



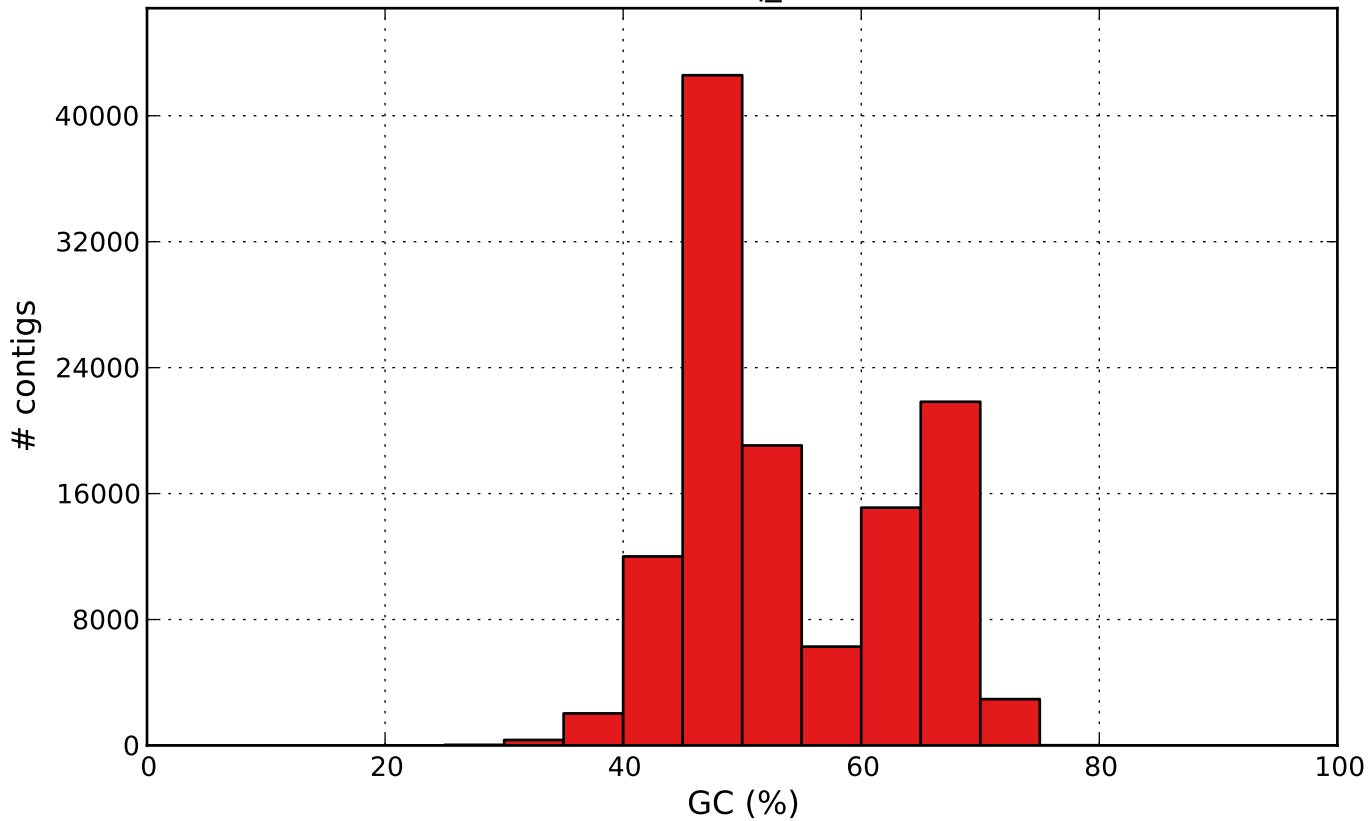
— SOAPdenovo2.scafSeq - - SOAPdenovo2.scafSeq_broken

SOAPdenovo2.scafSeq GC content



SOAPdenovo2.scafSeq

SOAPdenovo2.scafSeq_broken GC content



SOAPdenovo2.scafSeq_broken