

ECON3362 Labour Economics 1 2012-13

Location: 302 Tier **Time:** MWF 11:30-12:20

Instructor: W. Simpson

W. Simpson: Office 518 Fletcher Argue Bldg.
Phone 474 – 6174
Email: Wayne_Simpson@umanitoba.ca
Web: <http://home.cc.umanitoba.ca/~simpson/>

Office Hours: Mon. 10:00-11:00 and Wed 10:30-11:30. Students who wish to meet at other times should contact the instructor to make mutually convenient arrangements.

Required Text: Benjamin, Gunderson, Lemieux & Riddell, *Labour Market Economics* (7th Edition) McGraw-Hill Ryerson

Supplementary Material: Student Online Learning Centre at <http://www.mcgrawhill.ca/olc/benjamin/>

The site provides lecture notes, web links, sample questions, chapter summaries and access to the CANSIM database (time series data on the Canadian labour market and economy)

Calendar Description:

ECON 3362 - Labour Economics 1 (3 credit hours)

An introduction to labour economics, including labour supply, labour demand and the determination of wages and employment. Students may not hold credit for both ECON 3362 and the former ECON 3360 (018.336). Prerequisite: a grade of "C" or better in ECON 2450 (018.245) or ECON 2451 (018.245) or ECON 2700 (018.270).

Course Objectives:

The course will provide students with an introduction to the economics of the market for labour and allow them to examine a variety of topics associated with earning a living in the modern Canadian context. The course will assume that students have acquired a good understanding of intermediate microeconomics as a basis for many analytical concepts introduced in the course. The course will introduce the student to institutional features and statistical evidence relevant to understanding issues concerning the Canadian labour market. Assignments and examinations will allow students to demonstrate their understanding of the course material and its application to labour market problems, and will be governed by the University's policy on plagiarism and cheating at <http://webapps.cc.umanitoba.ca/calendar09/regulations/plagiarism.asp> and the University's policy on examination impersonation at http://webapps.cc.umanitoba.ca/calendar09/regulations/exams/exams_personations.asp in the online University of Manitoba General Calendar.

Course Outline:

The course will cover most topics from Chapters 1 to 7 (Parts 1, 2 and 3) of the text concerning labour supply and demand and the determination of wages and employment. The course will also cover aspects of Chapter 9 of the text (human capital) as time permits. Additional readings discussed in class will be posted at:

[http://home.cc.umanitoba.ca/~simpson/TM\(Current%20Teaching\).html](http://home.cc.umanitoba.ca/~simpson/TM(Current%20Teaching).html)

Course Requirements and Weighting:

- (1) Students will be required to write three term tests (20% each).
- (2) Students will be required to complete a set of assignments (40%)

Please note that exams must be written in ink, not pencil. Assignments may be written in ink, but students are encouraged to use spreadsheet, word processing and other computer software for assignments as applicable.

Students will not be permitted to write make-up tests or miss assignment submission deadlines except for documented medical or compassionate reasons. All deadlines must be met unless **prior** permission of the instructor for medical or compassionate reasons is obtained. Alternative grading schemes resulting from missed examinations and assignments will be at the sole discretion of the instructor.

Final Course Grade Determination:

Students will receive a numeric grade for each test and assignment and assigned a final letter grade based on the following scale:

A+ = (90+);
A = (80-89);
B+ = (74-79);
B = (68-73);
C+ = (62-67);
C = (56-61);
D = (45-55);
F = (below 45)

Final grades are subject to departmental review and revision.

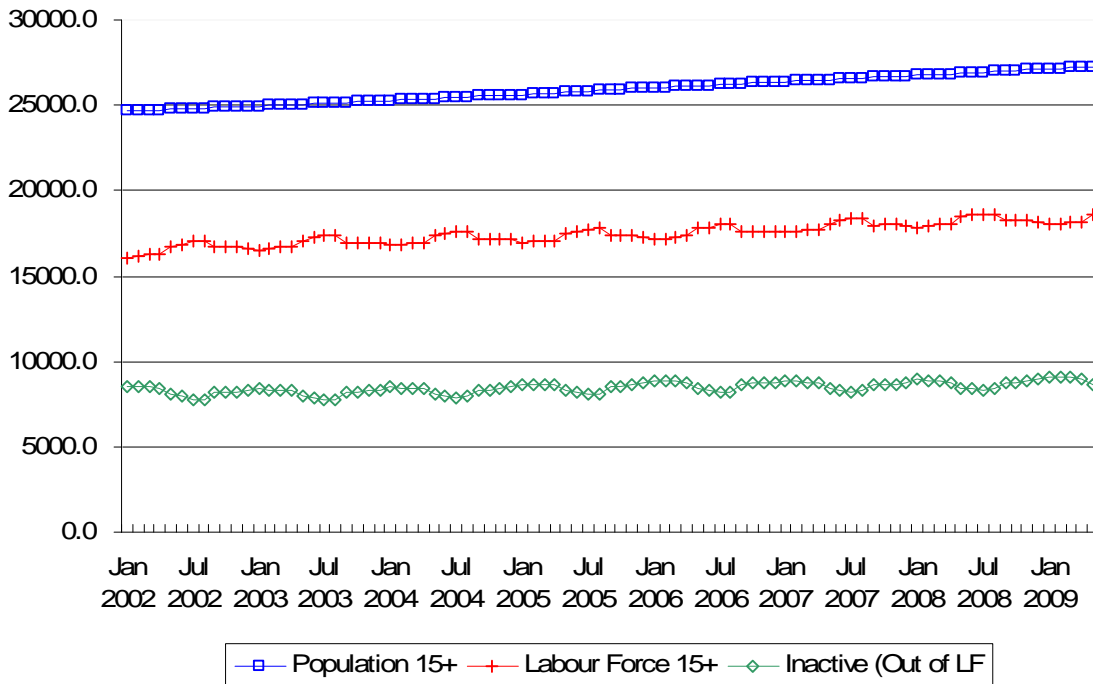
Course Regulations:

- The Voluntary Withdrawal date for this course is **November 14, 2012**
- Students must acquaint themselves with the University's policy on plagiarism and cheating at <http://webapps.cc.umanitoba.ca/calendar09/regulations/plagiarism.asp> and the University's policy on examination impersonation at http://webapps.cc.umanitoba.ca/calendar09/regulations/exams/exams_personations.asp in the online University of Manitoba General Calendar. Students who violate this policy will be subject to serious academic penalty. The common penalty in the Faculty of Arts for plagiarism on a written assignment is F for the paper and F(CW) (CW indicates compulsory withdrawal) for the course. The common penalty in Arts for academic

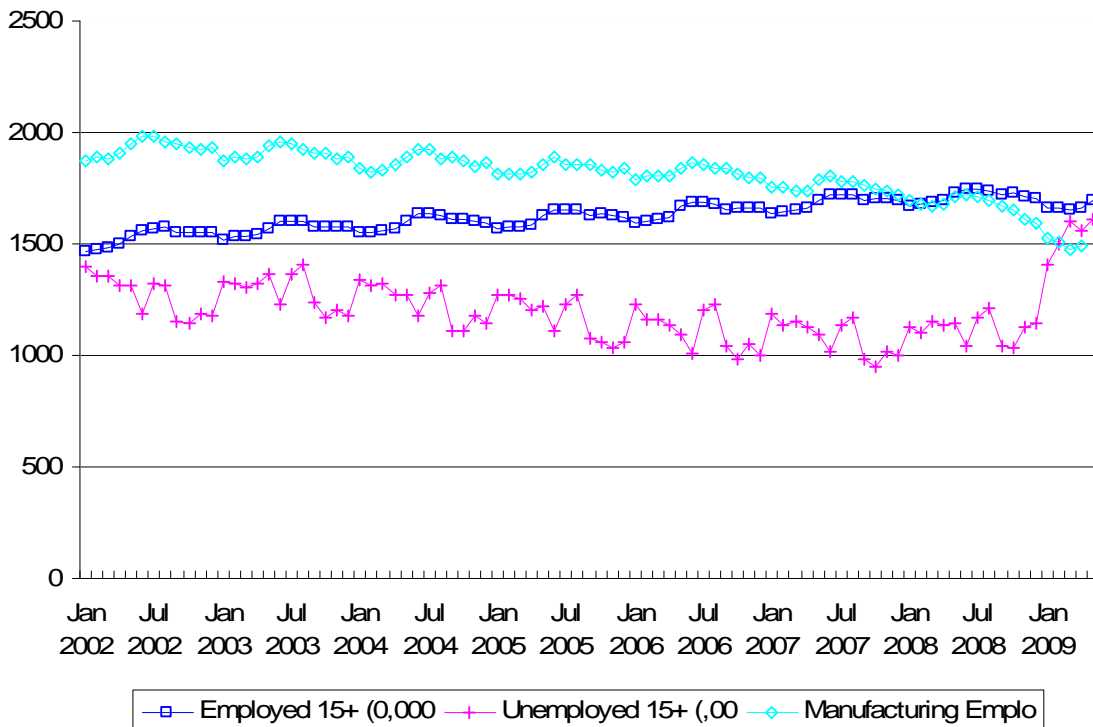
dishonesty on a test or examination is F for the paper, F(CW) for the course, and a one-year suspension from courses acceptable for credit in the Faculty of Arts. For more serious acts of academic dishonesty or plagiarism, including repeat violations and purchase of a paper, the penalty can include suspension for a period of up to five years from registration in courses taught in a particular department in Arts or from all courses offered in the Faculty of Arts. The Faculty reserves the right to submit student work that is suspected of being plagiarized to internet sites designed to detect plagiarism.

- Students will not be permitted to write make-up tests or miss submission deadlines except for documented medical or compassionate reasons. All deadlines must be met unless **prior** permission of the instructor for medical or compassionate reasons is obtained.
- Students appealing term work, whether formally or informally, must do so within ten working days of receiving their mark. Unreturned term work will become the property of the Faculty of Arts and will be subject to confidential destruction four months after the final examination period.
- Exams must be written in ink, not pencil. Assignments may be written in ink, but students are encouraged to use spreadsheet, word processing and other computer software for assignments as applicable.
- Students are responsible for making sure that their cell phones and other communication devices are turned off during class. Students are not permitted to answer phones or other communication devices during class without exception. Students who violate this policy may be asked to leave class and meet with the instructor at a mutually agreed time before returning to class.

Pop. and Labour Force, Canada, Both Sexes



Employed and Unemployed, Canada, Both Sexes



Source: Statistics Canada (ESTAT) via Data Library Services at <http://www.umanitoba.ca/libraries/units/datalib/estat.html>